



L.E.A.D.  
Teaching School Hub  
Lincolnshire

*Proud to be working with*



Lincolnshire  
Hub Partners



'Working in Partnership, achieving the highest outcomes for all'



L.E.A.D. Teaching School Hub Lincolnshire is committed to its vision, supporting schools to invest in their workforce in order to grow, recruit, develop and retain the very best teachers, support staff and leaders. This is with a view to complementing the internal support already offered by the educational setting.

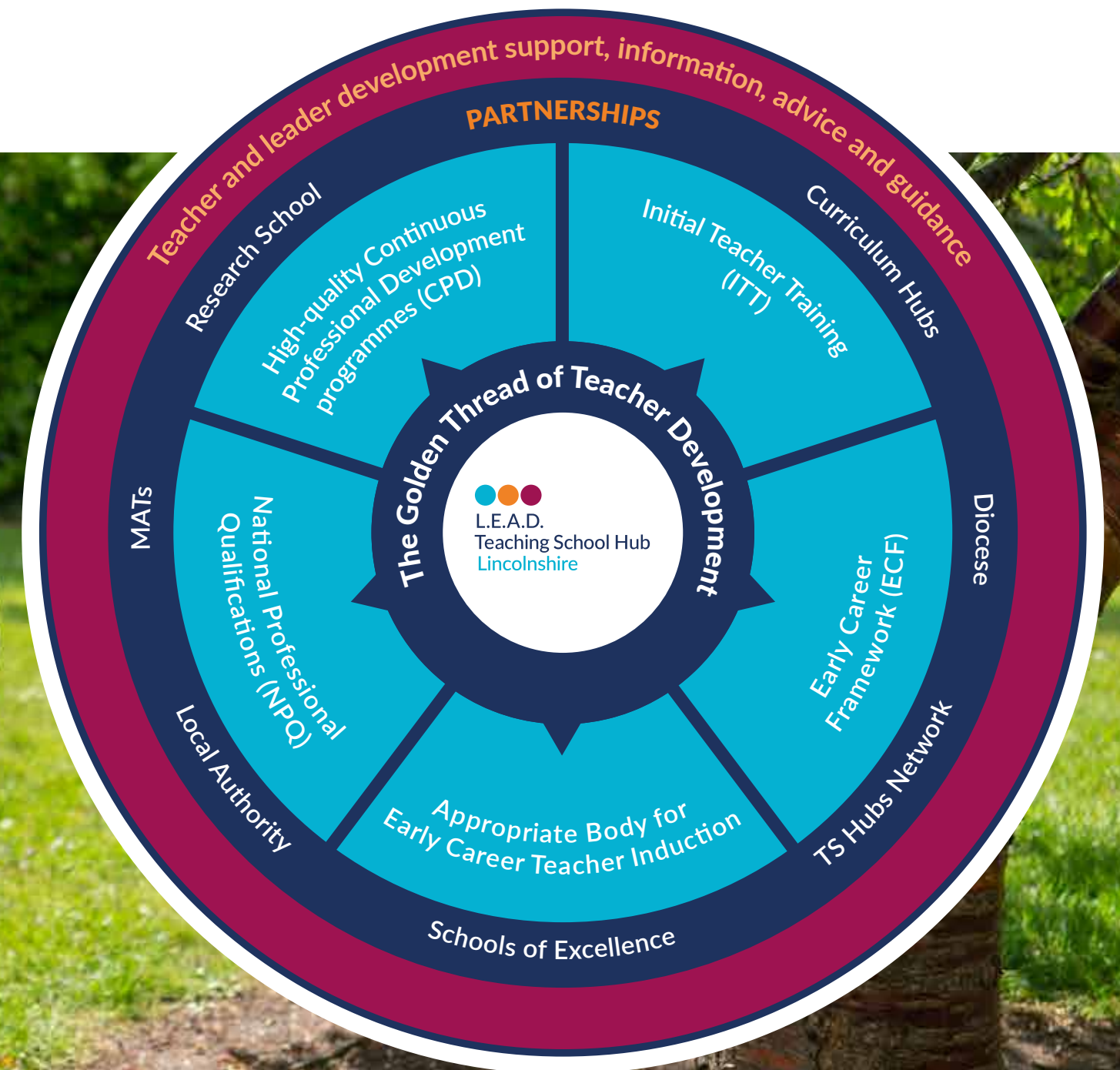
The role of the Hub is to promote the importance of high-quality continuing professional development from Initial Teacher Training through to executive leadership, supporting teachers throughout their career in a sequential and cohesive way. The ultimate aim is to impact upon the life chances, well-being and outcomes for pupils within our region.

The Teaching School Hub is designated to work with schools across Lincolnshire, outlined by the DfE as the following areas: **Boston, Lincoln, North Kesteven, South Holland, South Kesteven, East Lindsey, West Lindsey**, supporting every school type and phase, including Nursery, Primary, Secondary, Special and Alternative Provision.

## What is the Role of the Teaching School Hub?

The Teaching School Hub is working in partnership to provide Initial Teacher Training, The Early Career Framework & Appropriate Body Services, bespoke CPD and National Professional Qualifications.

This is summarised in the diagram below, alongside the various partners through which these services are delivered.





- Equity & Inclusion
- Excellence
- Collaboration & Partnership
- Innovation
- Achievement
- Making a positive difference
- Moral Purpose

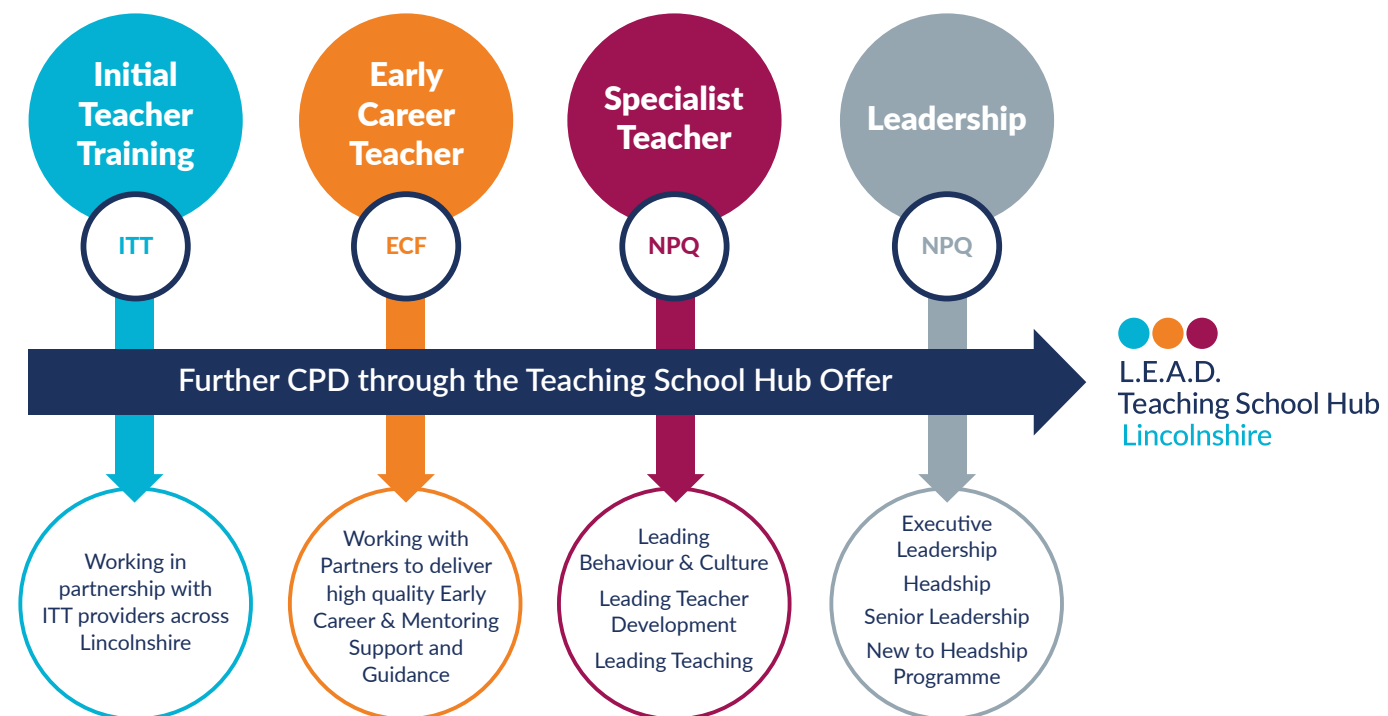
## Values

Serving the educational community of Lincolnshire, striving to achieve the very best for learners across the county, L.E.A.D. Teaching School Hub and partners have developed a set of values through which they will work, aiming ultimately for making a difference to the outcomes for learners across the region.



## Offering a Seamless and Coherent Career Pathway

In developing great teachers, leaders and support staff, L.E.A.D. Teaching School Hub is underpinned by the 'Golden Thread' of professional development. In this, the Hub and its partners have devised a simple image to demonstrate the opportunities at every career stage.



L.E.A.D. Teaching School Hub is organised according to the four headings below and is committed to supporting a coherent and simplistic approach to finding support for each educational setting.

Area	Professional Development Offer
<b>Initial Teacher Training ( ITT)</b>	The Hub is working closely with ITT providers across Lincolnshire, supporting the provision which is on offer.
<b>Early Career Framework (ECF)</b>	From September 2021, within the first 2 years of a teacher's career, the Early Career Framework is a statutory requirement. The Hub offers a high quality approach to this framework for both ECTs and Mentors, working closely with the lead provider (EDT)
<b>Appropriate Body Services ( AB)</b>	The Hub is the Appropriate Body for Lincolnshire. In fulfilling this role, the Hub conducts the statutory induction for Early Career teachers.
<b>National Professional Qualifications ( NPQ)</b>	There are 6 National Professional Qualifications (NPQs) which L.E.A.D. Teaching School Hub is proud to offer. <i>These include:</i> <b>Leadership NPQs:</b> NPQEL/NPQH/NPQSL <b>Specialist NPQs:</b> NPQ: Behaviour and Culture/ Leading Teaching and Leading Teacher development.
<b>Continuing Professional Development (CPD)</b>	CPD on offer through the Hub is approved by the DfE and meets the '5 Pillars' of Professional Development. All CPD is evidence informed and focuses on developing high quality teaching across the region.



**L.E.A.D.**  
**Teaching School Hub**  
**Lincolnshire**

To access any of these services or have a conversation about how the Hub can best support your setting, please contact the Hub directly:

**E:** [admin@leadtshub.co.uk](mailto:admin@leadtshub.co.uk)

**T:** 01522 214459

**[www.leadtshublincs.co.uk](http://www.leadtshublincs.co.uk)**