

SCHOOLS & EDUCATION SYSTEM CALENDAR OF EVENTS 2022/2023 ACADEMIC YEAR

Provided by Lincolnshire
County Council and the
Lincolnshire Learning
Partnership



INTRODUCTION

Dear Colleagues,

We move towards the 2022/23 academic year with renewed energy and enthusiasm to provide excellent education in Lincolnshire. To provide excellent education we must ensure that school leaders, teachers, governors and non-teaching staff are well informed and have the opportunity to develop through effective training.

We would like to outline the key dates of meetings/ webinars from Lincolnshire County Council and the Lincolnshire Learning Partnership for the 2022/23 academic year.

Please find in the subsequent pages of the document details of the provision we have organised for your school.

We are coordinating our offer with other Lincolnshire County Council School Services and you can access these via EduLincs, please see pages 14 to 18.

We are also coordinating our offer with the Teaching School Hub and other DfE designated hubs and you can find details of the collective hub offer on pages 19 and 20.

Further opportunities will be communicated throughout the year and we will use SchoolNews to communicate these to you. May we take this opportunity to wish you a restful summer break and we look forward to working with you and seeing you in the next academic year.

**Martin Smith - Assistant Director of Education
Lincolnshire County Council and Lincolnshire
Learning Partnership Board Member**

**Catherine Stratton -
Chair of the Lincolnshire Learning Partnership**



LINCOLNSHIRE LEARNING PARTNERSHIP LEADERSHIP BRIEFINGS

The LLP Leadership Briefings offer a valuable opportunity for school leaders to receive updates and insights on current issues, developing legislation and new initiatives, as well as challenges on the horizon.

The events will give attendees the strategic overview of Education in Lincolnshire and provide direction to access further support, programme and projects. Attendees have the opportunity to provide feedback to the Learning Partnership and the Council and have the opportunity to collaborate with colleagues from across the county's network of schools.

Registration is open to all headteachers, deputy headteachers and acting headteachers as well as the CEOs of Multi-Academy Trusts and their deputies.

The briefings are free of charge to all schools.

.....

The following Safeguarding events are part of the 2022-23 Lincolnshire County Council Safeguarding in Schools Offer. They are available to all Maintained Schools and to all Academies and other Independent settings that have purchased the Safeguarding in Schools offer, available via Edulincs

SAFEGUARDING BRIEFING/ DSL UPDATES

These updates are opportunities to hear the latest Safeguarding updates from a variety of speakers. Bookings via Enable be will open in the Autumn term. Full details will be made available in the Safeguarding bulletins. Maintained Schools are expected to attend at least twice over the academic year in order to be compliant and are strongly encouraged to attend all three rounds as each contain new updates.

SAFEGUARDING TRAINING PACKAGE: TRAIN THE TRAINER

This session is run by the LCC Safeguarding in Schools team. It is an optional course, available for anyone who would like time to look over the training package, see examples of how it can be delivered and ask questions; an opportunity to pick up top tips and see how it could be delivered in your setting.

.....

SAFEGUARDING ESSENTIALS

A session especially designed to support head teachers, DSL's and their deputies who are new to their role or new to Lincolnshire. The Safeguarding procedures, contacts and resources will be explained. Anyone who would like a refresh is also welcome to attend. There will be opportunities to ask questions.

.....

THE ROLE OF THE DESIGNATED SAFEGUARDING LEAD

A course you need to attend every two years to help you understand your role as the designated safeguarding lead. This session goes through the role and responsibilities as outlined in the latest statutory document 'Keeping Children Safe in Education'.

.....

SAFEGUARDING DSL DROP-IN

Drop-in sessions for any new or experienced Designated Safeguarding Lead or Deputy Safeguarding Lead. These sessions are an opportunity to ask any safeguarding questions you may have. Drop in to ask your question or stay for the hour. If you have any questions about this event, please contact Ruth Fox at safeguardinginschools@lincolnshire.gov.uk.

MANAGING SCHOOL ATTENDANCE SESSIONS FOR SCHOOL ATTENDANCE LEADS / ATTENDANCE CHAMPIONS

- Two sessions providing updates on changes to attendance legislation and guidance
- Information from services that support school attendance
- Focus on the changing government expectations, for example, attendance policy proposals, inter-agency working models

.....

SCHOOL ATTENDANCE DROP-INS

- An opportunity to bring attendance scenarios forward for advice or discussion with other attendance leads.
- There will be at least two sessions over the academic year per geographical area or cluster group.
- There will be additional sessions for specialist school provision

.....

MANAGING SCHOOL ATTENDANCE SELF-ASSESSMENT AUDIT TOOL WITH TRAINING

- An audit tool with built-in action plan facility allowing you to develop a school attendance improvement strategy
- Audit training sessions
- On-going support from virtual college and LCC Inclusion and Attendance team
- Notifications of updates to the audit due to changes in legislation or delivery requirements

.....

MANAGING SCHOOL ATTENDANCE EMAIL / TELEPHONE / TEAMS ADVICE AND GUIDANCE

- Email / Telephone / Teams advice and guidance (reasonable use limits apply)
 - Individual case discussions
 - Attendance code guidance
 - Advice and guidance on attendance policies and procedures in your school
 - Signposting to additional support services
-

SCHOOL ATTENDANCE: NEW STARTERS AND BASIC REFRESHER

- Series of workshops for new Attendance Officers or those who need a refresher of basic strategies
- Useful information on attendance coding and legal processes
- Casework – what is expected of schools

.....

GOVERNOR PARTNERSHIPS

To support all Governing Bodies, Lincolnshire County Council delivers Governor Partnership meetings in the autumn, spring and summer terms. These provide key strategic summaries so Governors/Trustees are kept up-to-date. Topics often include standards, updates on the national and regional agenda, Lincolnshire Learning Partnership updates, accessing support and provision within the county and much more.

The Governor Partnerships are run by Lincolnshire County Council. If you have any questions about this event please email: GovernorSupport@lincolnshire.gov.uk

.....

CLERKS NETWORKING

The Governor Services team at Lincolnshire County Council facilitates termly Clerks' Networking Meetings in order to support all Clerks to Governors, whether they clerk at a maintained school or an academy.

The meetings provide key updates on the role of the clerk, updates on any national or local issues and any legislative / regulatory changes that may have been made, and provide the opportunity to look at good practice from across the county. In addition to this, Clerks are able to discuss face-to-face with the LCC Governor Services team any support they may require with regard to school-related documentation or governance-related matters that are pertinent to the continued and consistent development of governance in Lincolnshire schools. If you have any questions about this event please email:

GovernorSupport@lincolnshire.gov.uk

Over pages 7 to 13 you will find a list of events being run over in the 2022/23 academic year. You will find booking links (where required) for the events that are being held beneath each event.

LINCOLNSHIRE LEARNING PARTNERSHIP LEADERSHIP BRIEFINGS

AUTUMN

Primary Leadership Briefings

- 27/9/22 (08:45 – 11:45) - Face to Face - The Golf Hotel, Woodhall Spa (TBC)
[Click here book your place](#)
- 28/9/2022 (08:45 – 11:45) - Face to Face - The Bentley Hotel, Lincoln
[Click here to book your place](#)
- 29/9/2022 (08:45 – 11:45) - Face to Face - The Urban Hotel, Grantham
[Click here to book your place](#)
- 3/10/2022 (08:45 – 11:45) - Face to Face - Springfields Events Centre, Spalding
[Click here to book your place](#)

Secondary Leadership Briefing

- 4/10/2022 (8:45 – 11:45) - Face to Face – Woodhall Spa Golf Hotel
[Click here to book your place](#)

In case you missed it....

- 6/10/2022 (10:00 – 11:30) - Virtual via Microsoft Teams (Mop up Session)
[Click here to book your place](#)

SPRING

Primary Leadership Briefing

- 28/02/2023 (8:45 – 11:45) - Face to Face - Woodhall Spa Golf Hotel (TBC)
[Click here to book your place](#)
- 01/03/2023 (8:45 – 11:45) - Face to Face - The Bentley, Lincoln
[Click here to book your place](#)
- 02/03/2023 (8:45 – 11:45) - Face to Face - Urban Hotel, Grantham
[Click here to book your place](#)
- 07/03/2023 (8:45 – 11:45) - Face to Face - Springfields Events Centre, Spalding
[Click here to book your place](#)

Secondary Leadership Briefing

- 09/03/2023 (8:45 – 11:45) - Face to Face - Golf Hotel, Woodhall Spa
[Click here to book your place](#)

In case you missed it....

- 08/03/2023 (10:00 – 11:30) - Virtual via Microsoft Teams (Mop up Session)
[Click here to book your place](#)

LINCOLNSHIRE LEARNING PARTNERSHIP LEADERSHIP BRIEFINGS

SUMMER

Primary Leadership Briefing

- 6/6/2023 (08:45 – 11:45) - Face to Face - The Golf Hotel, Woodhall Spa (TBC)
[Click here to book your place](#)
- 7/6/2023 (08:45 – 11:45) - Face to Face - Bentley Hotel, Lincoln
[Click here link to book your place](#)
- 8/6/2023 (08:45 – 11:45) - Face to Face - Urban Hotel, Grantham
[Click here to book your place](#)
- 13/6/2023 (08:45 – 11:45) - Face to Face - Springfield Events Centre, Spalding
[Click here to book your place](#)

Secondary Leadership Briefing

- 15/6/2023 (08:45 – 11:45) - Face to Face - The Golf Hotel, Woodhall Spa
[Click here to book your place](#)

In case you missed it...

- 14/06/2023 (10:00 – 11:30) - Virtual via Microsoft Teams (Mop up Session)
[Click here to book your place](#)

SAFEGUARDING BRIEFING/ DSL UPDATES

- 17/11/2022 (10:00 - 12:00) - Virtual via Microsoft Teams
- 24/11/2022 (10:00 - 12:00) - Virtual via Microsoft Teams

- 16/03/2023 (10:00 - 12:00) - Virtual via Microsoft Teams
[Click here to book your place](#) (replace with 'enable' link?)
- 23/03/2023 (10:00 - 12:00) - Virtual via Microsoft Teams
[Click here to book your place](#) (replace with 'enable' link?)

- 22/06/2023 (10:00 - 12:00) - Virtual via Microsoft Teams
[Click here to book your place](#) (replace with 'enable' link?)
- 29/06/2023 (10:00 - 12:00) - Virtual via Microsoft Teams
[Click here to book your place](#) (replace with 'enable' link?)

SAFEGUARDING ESSENTIALS

For Governors and Trustees

- 28/09/2022 (09:30 - 11:00) - Virtual via Microsoft Teams
[Click here to join the meeting](#)
- 15/03/2023 (18:30 - 20:00) - Virtual via Microsoft Teams
[Click here to book your place](#)

THE ROLE OF THE DESIGNATED SAFEGUARDING LEAD

- 22/09/2022 (10:00 - 12:00) - Virtual via Microsoft Teams
- 19/01/2023 (10:00 - 12:00) - Virtual via Microsoft Teams
- 27/04/2023 (10:00 - 12:00) - Virtual via Microsoft Teams
[Click here to book your place](#) - (insert Enable(?) link

SAFEGUARDING DSL DROP-IN SESSIONS

All DSL Drop-in sessions are continuing to run virtually via Microsoft Teams

- 29/09/2022 (10:00 - 11:00) - [Click here to join](#)
- 01/12/2022 (10:00 - 11:00) - [Click here to join](#)
- 09/02/2023 (10:00 - 11:00) - [Click here to join](#)
- 28/03/2023 (10:00 - 11:00) - [Click here to join](#)
- 16/05/2023 (10:00 - 11:00) - [Click here to join](#)
- 06/07/2023 (10:00 - 11:00) - [Click here to join](#)

SAFEGUARDING: TRAIN THE TRAINER

- 11/10/2022 (09:30 - 12:00) - [Click here to join](#)
- 02/02/2023 (09:30 - 12:00) - [Click here to join](#)
- 04/05/2023 (09:30 - 12:00) - [Click here to join](#)

CHILD SEXUAL ABUSE AWARENESS

- **xx/xx/2022** (xx:xx - xx:xx) - [Click here to join](#)

MAKING SENSE OF THE SCR & DBS OTHER CHECKS

- **xx/xx/2022** (xx:xx - xx:xx) - [Click here to join](#)

INCLUSION AND ATTENDANCE NEW STAFF STARTERS/ BASICS REFRESHER SESSIONS

- 15/09/2022 – (10:00 – 12:00) Session 1: Keeping Pupil Registers & Attendance Records – Virtual via Microsoft Teams
- 28/09/2022 – (10:00 – 12:00) Session 2: Casework Expectations – Virtual via Microsoft Teams
- 06/10/2022 – (10:00 – 12:00) Session 3: Legal Processes – Virtual via Microsoft Teams

Once services are purchased through Edulincs, please book onto the event via Enable

MANAGING SCHOOL ATTENDANCE BREIFING

- 12/10/2022 – (10:00 – 12:00) – Virtual via Microsoft Teams
- 26/04/2023 – (10:00 – 12:00) – Virtual via Microsoft Teams

Once services are purchased through Edulincs, please book onto the event via Enable.

MANAGING SCHOOL ATTENDANCE Q&A DROP-IN SESSIONS

- 19/10/2022 – (10:00 – 11:00) – Virtual via Microsoft Teams
- 19/01/2023 – (10:00 – 11:00) – Virtual via Microsoft Teams
- 05/07/2023 – (10:00 – 11:00) – Virtual via Microsoft Teams

Once services are purchased through Edulincs, please book onto the event via Enable

MANAGING SCHOOL ATTENDANCE TRAINING

School Attendance Policy

- 04/11/2022 – (10:00 – 12:00) – Virtual via Microsoft Teams

Initial Casework & Multi-Agency Approach

- 18/11/2022 – (10:00 – 12:00) – Virtual via Microsoft Teams

Legal Casework and Legal Reports

- 30/11/2022 – (10:00 – 12:00) – Virtual via Microsoft Teams

Once services are purchased through Edulincs, please book onto the event via Enable

SELF-ASSESSMENT AUDIT TRAINING SESSION

- 27/01/2023 – (10:00 – 12:00) – Virtual via Microsoft Teams
- 29/06/2023 – (10:00 – 12:00) – Virtual via Microsoft Teams

Once services are purchased through Edulincs, please book onto the event via Enable

INCLUSION AND ATTENDANCE DROP-IN SESSIONS SECONDARY SCHOOLS

Secondary Schools in South Holland and South Kesteven District Council Areas

- 02/02/2023 - (10:00 - 12:00) - Virtual via Microsoft Teams

Secondary Schools in Boston & East Lindsey District Council Areas

- 03/02/2023 - (10:00 - 12:00) - Virtual via Microsoft Teams

Secondary Schools in North Kesteven & West Lindsey & City of Lincoln District Council Areas

- 08/02/2023 - (10:00 - 12:00) - Virtual via Microsoft Teams

Secondary Schools All Areas Catch Up Session. (For secondary schools who were unable to attend the previous drop-in sessions for their area).

- 09/02/2023 - (10:00 - 12:00) - Virtual via Microsoft Teams

Please book onto these events via Enable.

PRIMARY SCHOOLS

Primary Schools in South Kesteven District Council Area

- 15/03/2023 - (10:00 - 12:00) - Virtual via Microsoft Teams

Primary Schools in West Lindsey District Council Area

- 16/03/2023 - (10:00 - 12:00) - Virtual via Microsoft Teams

Primary Schools in South Holland District Council Area

- 22/03/2023 - (10:00 - 12:00) - Virtual via Microsoft Teams

Primary Schools in City of Lincoln area

- 23/03/2023 - (10:00 - 12:00) - Virtual via Microsoft Teams

Primary Schools Boston Borough Council Area

- 29/03/2023 - (10:00 - 12:00) - Virtual via Microsoft Teams

Primary Schools East Lindsey District Council Area

- 30/03/2023 - (10:00 - 12:00) - Virtual via Microsoft Teams

Primary Schools in North Kesteven District Council Area

- 20/04/2023 - (10:00 - 12:00) - Virtual via Microsoft Teams

Primary Schools All Areas Catch Up Session. For any Primary Schools who were unable to attend the previous drop-in sessions for their area.

- 21/04/2023 - (10:00 - 12:00) - Virtual via Microsoft Teams

Please book onto these events via Enable.

GOVERNOR PARTNERSHIP

- 12/10/2022 (14:00 - 15:00) - Virtual via Microsoft Teams - [Click here to book your place](#)
- 12/10/2022 (19:00 - 20:00) - Virtual via Microsoft Teams - [Click here to book your place](#)

- 22/03/2023 (14:00 - 15:00) - Virtual via Microsoft Teams - [Click here to book your place](#)
- 22/03/2023 (19:00 - 20:00) - Virtual via Microsoft Teams - [Click here to book your place](#)

- 14/06/2023 (14:00 - 15:00) - Virtual via Microsoft Teams - [Click here to book your place](#)
- 14/06/2023 (19:00 - 20:00) - Virtual via Microsoft Teams - [Click here to book your place](#)

CLERKS NETWORKING

- 14/09/2022 (10:00 - 11:00) - Virtual via Microsoft Teams - [Click here to book your place](#)
- 18/01/2023 (10:00 - 11:00) - Virtual via Microsoft Teams - [Click here to book your place](#)
- 26/04/2023 (10:00 - 11:00) - Virtual via Microsoft Teams - [Click here to book your place](#)

Please follow the below link to access the Governor Support Training and Development Offer for 2021-22.

[Governor Support Training and Development Offer for 2021-22](#)

EDULINCS

EduLincs – Free of Charge Services

Not every offer from EduLincs incurs a cost – there are several free of charge services and offers, including Domestic abuse policy and procedure advice, Governor Services and Independent travel for SEND students travelling on school or college transport.

These offers can be accessed from this link - EduLincs Free of Charge Services. While you're exploring these offers, why not take the opportunity to have a look at what else EduLincs can offer your setting, starting here - EduLincs Home Page.

This contents page has now been updated with additional useful links to information and resources for schools and other education settings requested by schools who attended the EduLincs Focus Group Meeting. If there are others areas of support you would like to enquire about, please get in touch with the EduLincs team at EduLincs@lincolnshire.gov.uk.

EduLincs is the name for the single point of access through which schools are able to request information, obtain quotes and place orders in relation to a wide range of services. These services offer high quality and cost-effective support to schools, helping them to meet legal requirements and improve outcomes for pupils, through a mixture of chargeable and free of charge offers.

*To access the EduLincs site you will need the EduLincs password (case and space sensitive):
Educational Settings*

Finance support

[Free school meals eligibility checking service](#)

[Procurement 101 training](#)

[Procurement service](#)

[Internal audit services](#)

[Counter fraud services](#)

[Financial services for maintained Business World schools](#)

Premises support

[Energy efficiency support for Lincolnshire County Council maintained schools](#)

[Professional highway design and civil engineering services](#)

[Statutory and essential maintenance scheme \(SEMS\)](#)

[Public rights of way advice](#)

[Risk management services](#)

Leadership support

[Independent service for school admissions appeals](#)

[Managing school attendance](#)

[Safeguarding in schools and education settings](#)

[Governor services](#)

[Data protection advice service](#)

[HR advisory services to schools and academies](#)

[Media training](#)

[Health and safety services](#)

Performance support

[Performance services - 2021-22 academic year](#)

Admin support

[Business support](#)

[Clerking](#)

Curriculum support

[Educational visits service](#)

[Food education - health and wellbeing](#)

[Bikeability](#)

[Early years and childcare support: quality improvement](#)

[Lincolnshire energy from waste visitor centre](#)

[Culture services to schools](#)

[Lincolnshire music service](#)

[Road safety awareness lessons](#)

[Stay safe partnership](#)

[Year 2 and year 6 – fire safety](#)

SEND support

[Dyslexia outreach support](#)

[Specialist speech and language training](#)

[Specialist teaching team](#)

[Independent travel for SEND students travelling on school or college transport \(ITT\)](#)

[Sensory education and support team](#)

Family/community support

[Ethnic minority and traveller education team](#)

[Family learning](#)

[Domestic abuse policy and procedure advice](#)

[Healthy weight self-service portfolio of interventions](#)

Useful Links outside of EduLincs



Finance and Health & Safety

Information regarding school budget shares -

<https://www.lincolnshire.gov.uk/finances-budgets/school-finances>

Health and Safety Executive guidance on managing significant risks in the school sector -

<https://www.hse.gov.uk/services/education/>

First Aid training - The Stay Safe Partnership run 'emergency first aid skills for life' workshops, first aid and emergency first aid training and mental health awareness and mental health first aid training for adults. Details can be found here

<https://www.lincolnshire.gov.uk/directory/16/stay-safe-partnership>

Health and Wellbeing

British Nutrition Foundation - useful resources and information about healthy living -

<https://www.nutrition.org.uk/>

Here4You Mental Health Services (CAMHS and Healthy Minds Lincolnshire) - advice and/or self-referral to children and young people's mental health/emotional wellbeing services -

<https://www.lpft.nhs.uk/young-people/lincolnshire/contact-us>

CAMHS - provides support and treatment to CYP up to their 18th birthday (or those aged 24 and under the care of the Local Authority)

[Child and Adolescent Mental Health Services \(CAMHS\) | Lincolnshire FSD](#)

[Child and Adolescent Mental Health Service \(CAMHS\) :: Lincolnshire Young Minds \(lpft.nhs.uk\)](#)

Healthy Minds Lincolnshire - supports the emotional wellbeing needs of children and young people in Lincolnshire -

[Healthy Minds Lincolnshire | Lincolnshire FSD](#)

[Healthy Minds Lincolnshire :: Lincolnshire Young Minds \(lpft.nhs.uk\)](#)

Mental Health Support Teams (MHST) – for Lincolnshire school-aged children and young people up to the age of 5 to 18 years (25 SEND or care leaver)

[Mental Health Support Teams \(MHST\) :: Lincolnshire Young Minds \(lpft.nhs.uk\)](#)

Lincolnshire Centre for Grief and Loss – Advice and counselling service - the service is commissioned to improve the health and well-being of young people in Lincolnshire (up to the age of 19) who are experiencing grief and loss

[Lincolnshire Centre for Grief and Loss | Lincolnshire FSD](#)

[CYP Counselling Services \(lcgl.org.uk\)](#)

Kooth - Kooth.com is a web-based service, providing an anonymous Online Counselling Support Service

[Kooth Online Counselling](#) | [Lincolnshire FSD Home - Kooth](#)



Health and Wellbeing advice, signposting and support can be found on the County Council's website - <https://www.lincolnshire.gov.uk/health-wellbeing>

Mental health resources for children and young people, parents/carers and school staff - <https://educationhub.blog.gov.uk/2021/02/01/mental-health-resources-for-children-parents-carers-and-school-staff/>

Mental health and wellbeing resources for teachers and teaching staff - https://assets.publishing.service.gov.uk/government/uploads/system/uploads/attachment_data/file/993669/Mental_Health_Resources_for_teachers_and_teaching_staff_June_2021.pdf

Promoting children and young people's emotional health and wellbeing – a whole school approach - www.gov.uk/government/publications/promoting-children-and-young-peoples-emotional-health-and-wellbeing

Senior Mental Health Lead Training – schools and colleges - www.gov.uk/guidance/senior-mental-health-lead-training

Change4Life - a range of teaching resources for schools to support children and young people to make healthy choices and encourage parents/carers to promote healthy lifestyle choices - <https://campaignresources.phe.gov.uk/schools>

PSHE - Useful PSHE guidance and resources for schools - www.pshe-association.org.uk

Sex Education Forum - Useful teaching resources for schools to support relationships and sex education (RSE) - www.sexeducationforum.org.uk

Food hygiene/Food safety training

Contact details for Environmental Health Services who are based at the District Councils:

East Lindsey <https://www.e-lindsey.gov.uk/foodhygienetraining>

South Kesteven <http://www.southkesteven.gov.uk/index.aspx?articleid=8308>

Lincoln City food@lincoln.gov.uk

West Lindsey food.healthandsafety@west-lindsey.gov.uk

North Kesteven EHTeam@n-kesteven.gov.uk

Boston environmental.health@boston.gov.uk

South Holland Food Safety Team: 01775 761161

The **Food Education** team at the County Council delivers many types of training for lunchtime staff and covers all other aspects of school food provision and food education. We will continue to promote this on our [Edulincs page](#).



Preventative wellbeing offer – the Specialist Teaching Team are looking into some members of the team becoming Specialist SEMH teachers but this won't 'go live' for at least 18 months. For further information please contact STTenquiries@lincolnshire.gov.uk

SEND

SEND Advice Line for Lincolnshire (Ask SALL) - <https://www.lincolnshire.gov.uk/support-education/ask-sall> Support for all educational settings 0-25yrs

Sensory support services can be found at - [Lincolnshire Sensory Services – Sight and Hearing Loss Support](#)

LCCHS Children's Therapy Services - lincolnshirechildrenstherapyservices.nhs.uk provides more information regarding referrals for children's physiotherapy and motor skills.

Dyscalculia – the Specialist Teaching Team now offer dyscalculia assessments: <https://www.lincolnshire.gov.uk/directory-record/63946/specialist-teaching-team>

Premises and Facilities

Good Estate Management for Schools - Information on the policies, processes and documents that educational settings should consider when managing their estates - www.gov.uk/guidance/good-estate-management-for-schools

Information for Families

Family Services Directory (FSD) & SEND Local Offer - an online guide to services and information on local organisations for parents, practitioners, children, young people, partners & providers - <https://lincolnshire.fsd.org.uk/kb5/lincs/fsd/home.page>

Lincolnshire County Council's Graduated Approach to SEND - <https://www.lincolnshire.gov.uk/start-send/identifying-supporting-send/6>

Makaton Charity - Information on national Makaton training and resources available for parents/carers and professionals - www.makaton.org

L.E.A.D. TEACHING SCHOOL HUB LINCOLNSHIRE

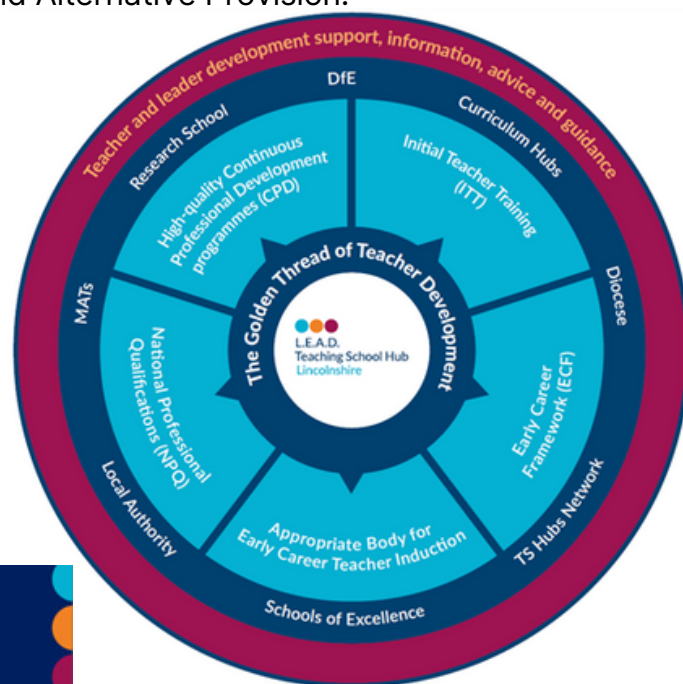


Overview

L.E.A.D. Teaching School Hub Lincolnshire is committed to its vision, supporting schools to invest in their workforce in order to grow, recruit, develop and retain the very best teachers, support staff and leaders. This is with a view to complementing the internal support already offered by the educational setting. The role of the Hub is to promote the importance of high-quality continuing professional development from Initial Teacher Training through to executive leadership, supporting teachers throughout their career in a sequential and cohesive way. The ultimate aim is to impact upon the life chances, well-being and outcomes for pupils within our region. The Teaching School Hub is designated to work with schools across Lincolnshire, outlined by the DfE as the following areas: Boston, Lincoln, North Kesteven, South Holland, South Kesteven, East Lindsey, West Lindsey, supporting every school type and phase, including Nursery, Primary, Secondary, Special and Alternative Provision.

What is the Role of the Teaching School Hub?

The Teaching School Hub is working in partnership to provide Initial Teacher Training, The Early Career Framework & Appropriate Body Services, bespoke CPD and National Professional Qualifications. This is summarised in the diagram below, alongside the various partners through which these services are delivered.



Serving the educational community of Lincolnshire, striving to achieve the very best for learners across the county, L.E.A.D. Teaching School Hub and partners have developed a set of values through which they will work, aiming ultimately for making a difference to the outcomes for learners across the region

Proud to be working with...



Offering a Seamless and Coherent Career Pathway

In developing great teachers, leaders and support staff, L.E.A.D. Teaching School Hub is underpinned by the 'Golden Thread' of professional development.

L.E.A.D. Teaching School Hub is organised according to the four headings below and is committed to supporting a coherent and simplistic approach to finding support for each educational setting.

Area	Professional Development Offer
Initial Teacher Training (ITT)	The Hub is working closely with ITT providers across Lincolnshire, supporting the provision which is on offer.
Early Career Framework (ECF)	From September 2021, within the first 2 years of a teacher's career, the Early Career Framework is a statutory requirement. The Hub offers a high quality approach to this framework for both ECTs and Mentors, working closely with the lead provider (EDT)
Appropriate Body Services (AB)	The Hub is the Appropriate Body for Lincolnshire. In fulfilling this role, the Hub conducts the statutory induction for Early Career teachers.
National Professional Qualifications (NPQ)	There are 6 National Professional Qualifications (NPQs) which L.E.A.D Teaching School Hub is proud to offer. These include: Leadership NPQs: NPQEL/NPQH/NPQSL/ NPQEYL Specialist NPQs: Behaviour and Culture/Leading Teaching/ Leading Teacher Development and Leading Literacy.
Development (CPD)	CPD on offer through the Hub is approved by the DfE and meets the 'Pillars' of Professional Development. All CPD is evidence informed and focuses on developing high quality teaching across the region.

CONTACT L.E.A.D. TEACHING SCHOOL HUB LINCOLNSHIRE

To access any of these services or have a conversation about how the Hub can best support your setting, please contact the Hub directly:

Email: admin@leadtshub.co.uk

Telephone: 01522 214459

Website: www.leadtshublincs.co.uk

**If you require any further information about the contents of this booklet,
please contact LLP@lincolnshire.gov.uk**

