



# L.E.A.D. Teaching School Hub Lincolnshire

🐦 @LEADTSHub

📘 @LEADTSHub

🌐 [www.leadtshublincs.co.uk](http://www.leadtshublincs.co.uk)

*Proud to be working with*



'WORKING IN PARTNERSHIP, ACHIEVING THE HIGHEST OUTCOMES FOR ALL'

Issue No.19 February 2023



## FEBRUARY/MARCH NEWS...

It is unbelievable that February is here already! A lot has taken place since the previous newsletter. The Teaching School Hub has worked with national providers with a view to developing a writing portal for Lincolnshire. This will be in conjunction with Keystone Academy Trust and the moderation team to construct this.

Equally, we are proud to have successfully hosted the DfE at the regional event for ECF as well as EDT who came to quality assure both the ECF and NPQ programmes. We are delighted with both outcomes, recognising that the Hub is striving to continually adapt and deliver the materials and content.

We hope that you find this month's newsletter useful, we have included resources and documents to support both leadership and teaching.

# RESOURCES FOR ALL STAFF MEMBERS TO ACCESS

DO NOT MISS THE PORTAL OF FREE RESOURCES FOR STAFF MEMBERS TO ACCESS



## Free Online Tool for Reading & Vocabulary

This free online tool can be found [here](#).

Add any text and it will identify and define the key vocabulary (example left).

Simply select 'Print/Learning Activities' once you have added your text to decide upon the best resource to enhance learning.



## Preparing for Ofsted CPD

[Here](#) are some resources to support the preparation towards an Ofsted Inspection in Safeguarding

## Four Nativities & an Ofsted Inspection

TO VIEW  
CLICK  
HERE

## How Pupils Learn

Following the focus upon curriculum mapping and intent, you may be looking closely at the implementation and associated approaches. [Here](#) are some elements which may support you with this.

## EDI

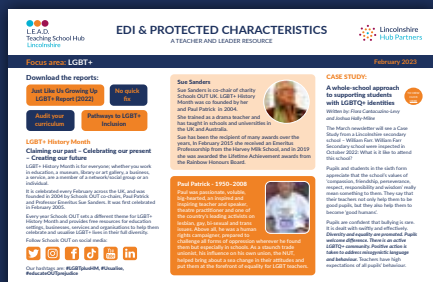
On 12th January, L.E.A.D. Teaching School Hub invited schools from the Transform Trust to share good practice in relation to EDI. There were so many excellent resources and approaches shared with positive feedback from the schools attending. If you would like to use this with your staff team to raise strategies, understanding and awareness, please do feel free to share the link [here](#) and Passcode: [&7&u9%W#](#)



## EDI & Protected Characteristics - Resources and Updates

In supporting schools to develop their approach to protected characteristics and equality, we have produced a monthly resource for teachers.

Please find this month's newsletter [here](#).



## EDI Calendar as a Resource for Schools

The Teaching School Hub team has produced calendars to support leaders in identifying national events across the academic year which could be used to support the pupils in learning about equality and diversity. Please see the February and March calendars in the links below:

February

March



ECF

AB



Thank you for enabling your ECT to network and collaborate with other colleagues from across Lincolnshire. Joined by both the DfE and EDT, we have held three regional events across the county.

Here are what ECTs thought:



*“I enjoyed learning about adaptive practise as I can promote it daily in school.”*

95% good



*“Reading for pleasure is currently a focus initiative that we are rolling out in school so it was timed well for my current needs. I learnt a lot which I can take away and try with my class.”*

*“SEND is a huge focus in my school at present and there were lots of points that I felt I could apply to day-to-day practice.”*

Read the **ECF/AB newsletter** for the latest updates and guidance [here](#)



# NPQ

The deadline for the NPQ February cohort has now been reached. We have now successfully onboarded 4 cohorts across Lincolnshire for the Leadership and Specialist NPQ programmes.

We have a total of 322 participants for 2022/23 across the leadership and specialist programmes. This number, added to the total amount of participants for 2021/22, means that 623 of all the teachers and leaders across Lincolnshire have taken part in an NPQ programme across the two years that the revised qualifications have been in place.

**Cohort 1** are eagerly anticipating the news with regards to their final summative assessment, we are hoping that this information will be shared by the end of January 2023 as we were originally informed by the DfE. **Cohort 2** are about to embark on their final assessment – we wish them luck with a successful completion of this. The assessment window for the February 2023 Specialist NPQ cohort will open at **6pm on Wednesday 1st February until Friday 10th February, 2023.**

Further  
information about  
**NPQ**  
[here](#)

---

## Alumni Groups

Thank you for participants who have signed up to attend the first of the Alumni Groups. We are excited about the potential of these groups in supporting participants with the continuation of their journey in the specialist area that you worked on as part of your NPQ programme as well as extending the learning. We aim to continue to develop the learning, introducing expert speakers where appropriate, building the support network across the group so everyone feels they have colleagues to go to when in need of examples of practice / proformas / resources - building the gift culture across the county.

With this in mind we have taken the decision to push the first date back to the date of the second session - the aim is to encourage more participants to join us. The Alumni Groups will be shared at the next Leadership Briefings to support Head Teachers understanding the importance of this piece of work.





Lincolnshire  
 Massed Ensemble  
 – Royal Albert Hall  
 Music for Youth  
 Nov 2022



## Curriculum Hubs ...under the spotlight this month



## The National Plan for Music Education – The Power of Music to Change Lives

In June 2022, the Government published its vision [here](#) to enable all children and young people to:

- learn to sing, play an instrument and create music together
- have the opportunity to progress their musical interests and talents, including professionally

It sets out what a great music education in school should include:

- at least one hour of classroom music teaching for key stages 1 – 3
- access to lessons across a range of instruments, and for singing
- opportunities to join a school choir or vocal group
- opportunities to join a school ensemble, band or group (such as an orchestra or rock band)
- opportunities to have their music heard e.g. concerts, competitions or shows
- opportunities to engage with live performances at least once a year
- opportunities to take music qualifications in secondary school e.g. GCSEs / A Levels / VTQs and graded music exams

Further information about  
**Music Service**  
[here](#)

Lincolnshire Music Hub, led by Lincolnshire Music Service, can support you to deliver this vision. Support includes:

Financial support for all for instrumental and vocal lessons through LMS	A wide range of choirs and ensembles	Live music and other music opportunities	Support and CPD for all schools	Do not miss the music Subject Leadership Forum
--	--------------------------------------	--	---------------------------------	--

Contact [musicservice@lincolnshire.gov.uk](mailto:musicservice@lincolnshire.gov.uk) for more information.

CLICK HERE



# Upcoming CPD

Click on your chosen programme to book



**Developing Early Years with Mixed Aged Classes:  
Thursday 2nd February**



**Developing the Expertise in Writing  
(Primary and Secondary Colleagues)  
Monday 6th February**



**Assessing Pupil Progress in RE  
Tuesday 7th February**



**Leading Effective Meetings  
Monday 27th February**



**Early Years TA Training  
Wednesday 1st March**



**Primary History Conference  
Thursday 2nd March**



**Domestic Abuse and Parental conflict  
Friday 3rd March**



**L.E.A.D.**  
Teaching School Hub  
Lincolnshire

[www.leadshublincs.co.uk](http://www.leadshublincs.co.uk)