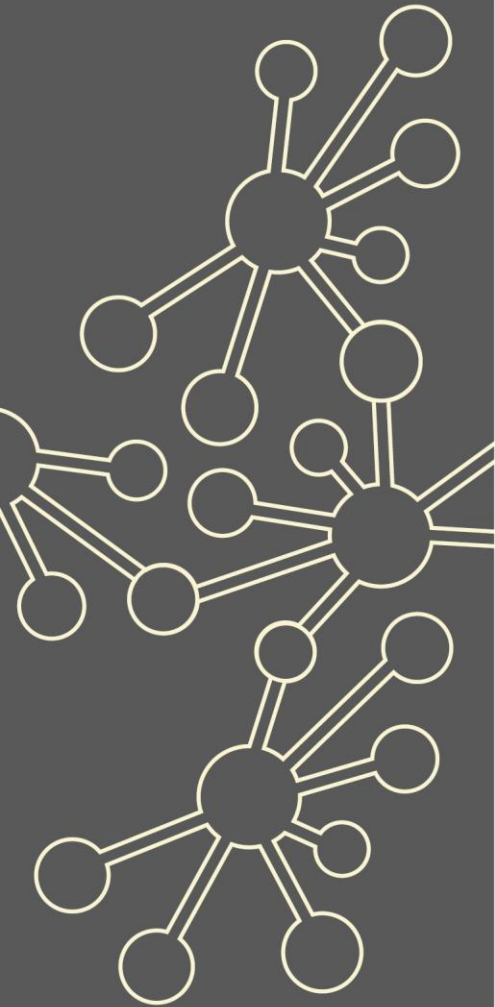


School Development Lead Programme

Maths Hubs Network
Collaborative Projects
2021/22

NCP21-05



Outline

This project aims to support mathematics Leads whose role is to lead change in a school or group of schools other than their own.

Details

What is involved?

It will provide a regional support programme through a series of three days of workshops (face-to-face and online), practice development activities, and an online community. The face-to-face workshops will run regionally across England.

Participants undertake to plan, lead and evaluate a school development initiative for a school or group of schools and to record their planning, evaluation and reflection in an Accreditation Evidence Document.

Successful completion of the programme and satisfactory completion of all tasks and related paperwork will result in the participant being accredited as an NCETM Accredited School Development Lead.

Who can take part?

The programme is for teachers **leading change in a school or group of schools other than their own**, and will benefit those who have previous experience of developing leadership capacity in schools/groups of schools or who are new to the role.

What are the benefits?

Participants will:

- ✓ support schools, groups of schools or MATs to establish sustainable cross-school approaches to collaboration and development for maths teaching
- ✓ start to use collaborative Work Group models as one of their school development strategies
- ✓ evaluate and review the effectiveness of maths school development models
- ✓ develop skills in driving improvement in maths, including developing the capacity of school leadership of maths
- ✓ know and understand of the challenges and barriers to school development in maths and how to tackle them
- ✓ know and understand effective approaches to teaching maths, including teaching for mastery.

What is the cost?

The School Development Lead Programme is fully funded by the Maths Hubs Programme so is free to participating schools.

Covid-19 Recovery

Many positive lessons were learnt from online collaboration during Maths Hubs activity in 2020/21. These will be built upon in 2021/22.

As the impact of the pandemic hopefully recedes, the result for Maths Hubs work will be a blend of face-to-face activities and frequent online collaboration.



The wider context

One of the aims of the NCETM and the Maths Hubs Network is to provide opportunities for all practitioners of maths to benefit from high quality collaborative professional development. This requires that there are enough people with the skills and capacity to lead, facilitate and support the professional development of others, both within and across settings.

In order to carry out their work, Maths Hubs identify, develop and support local leaders of maths education (LLME). The LLME work together as part of their Maths Hub team to support schools and colleges across their Maths Hub area. The NCETM Professional Development Lead Development and Accreditation Programme is designed specifically to address this need.

Expectations of participants and their schools

Participants will be expected to commit to the full programme of activities and will need the support of the headteacher of their own school and/or their MAT. It is also expected that participants will be leading a maths school development initiative during the year of the programme.

About the Hub

What is a Work Group?

Work Groups comprise of a group of schools who work on something together over the course of an academic year. Participating teachers will be guided by an experienced Work Group Lead, and will engage in intersessional tasks, trying things out in their classrooms, and feeding back to the group.

More information about the hub

At East Midlands East we are committed to supporting colleagues to become outstanding practitioners – learning from the best of local, national and international practice. We will work with colleagues to provide opportunities to engage with research, develop new practices and to share that development to make a positive impact on learners.

Work Group locations/dates

Locations and dates to be confirmed.

To Apply

For more information or to apply click [here](#)

If you have any queries contact enquiries@ememathshub.org

