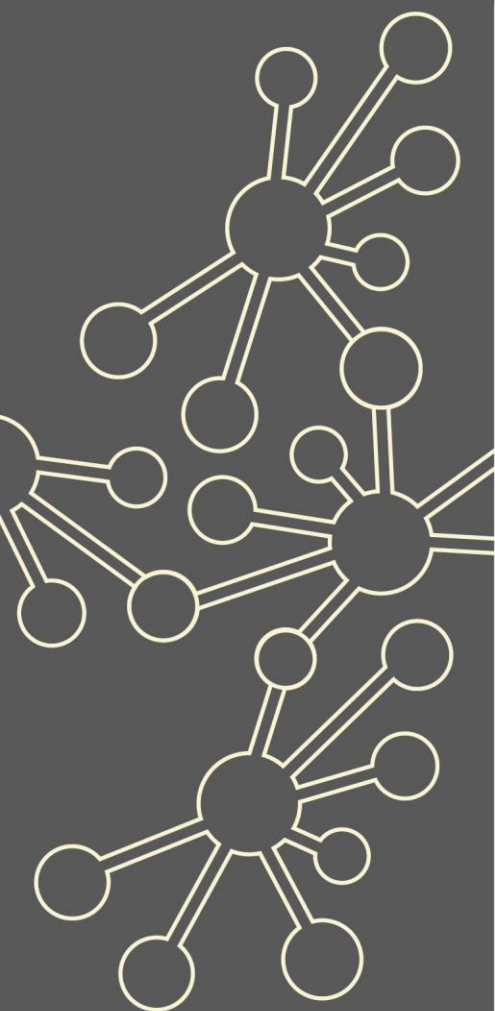


Primary Teaching for Mastery – Embedding

Maths Hubs Network Collaborative Projects 2021/22

NCP21-10



Outline

Work Groups in this project build on Development Work Groups, and involve scaling up teaching for mastery approaches from the lead participants' classrooms to ensure practices across the whole school are consistently adopted. This involves working with school leaders and classroom practitioners and establishing systems of professional development which support continual improvement and refinement within and across schools.

Details

What is involved?

There are six workshops across the academic year which include opportunity for:

- creation of a bespoke action plan to reflect on impact of changes
- headteachers to meet to develop their understanding of embedding teaching for mastery
- support for subject leaders to develop themselves and others
- reflecting on work completed back in schools
- at least one experience of collectively planning a lesson (this could be online) which is taught and reflected upon.

There is also one school visit from the Primary Mastery Specialist who runs the Work Group to support embedding changes in each school.

Who can take part?

This project is for schools who have previously participated in a Development Work Group. All schools must show a strong commitment from both school and subject leadership for embedding teaching for mastery approaches, and at least the lead participant teacher from the Development Work Group school must have already started using teaching for mastery approaches. Each school will have a lead participant, normally the subject leader for maths. They are likely to have played a lead role in previous years. Any additional participants should be in a position to play an active role in leading change across the school. It is important that school leadership team including the headteacher are also involved to ensure that there is a whole school commitment for embedding changes.

What are the benefits?

Participants and their schools will:

- ✓ enhance their mathematical subject knowledge, emphasising key areas of maths
- ✓ cultivate a deep understanding of the principles and pedagogies of mastery
- ✓ understand the school-wide structures which enable staff to develop mastery approaches
- ✓ develop the ability to plan, teach and reflect on lessons with a mastery approach
- ✓ establish a set of principles, policies, practices and systems which embody a teaching for mastery approach.

What is the cost?

The Primary Teaching for Mastery – Embedding project is fully funded by the Maths Hubs Programme so is free to participating schools.

Covid-19 Recovery

Many positive lessons were learnt from online collaboration during Maths Hubs activity in 2020/21. These will be built upon in 2021/22.

As the impact of the pandemic hopefully recedes, the result for Maths Hubs work will be a blend of face-to-face activities and frequent online collaboration.



The wider context

The strategic goal of the programme for primary schools is to establish teaching for mastery approaches so that all pupils develop deep knowledge, understanding and confidence. Schools working on establishing teaching for mastery are first supported in a Development Work Group and then in an Embedding Work Group (and, in some cases, initially a Mastery Readiness Work Group). After this, schools will work in Sustaining Work Groups.

Expectations of participants and their schools

Schools must be able to commit to the full academic year's programme. This involves six workshops across the academic year, as well as classroom and school-based activity.

About the Hub

What is a Work Group?

Work Groups comprise of a group of schools who work on something together over the course of an academic year. Participating teachers will be guided by an experienced Work Group Lead, and will engage in intersessional tasks, trying things out in their classrooms, and feeding back to the group.

More information about the hub

At East Midlands East we are committed to supporting colleagues to become outstanding practitioners – learning from the best of local, national and international practice. We will work with colleagues to provide opportunities to engage with research, develop new practices and to share that development to make a positive impact on learners.

Work Group locations/dates

These will vary dependant on the Primary Mastery Specialist and will be confirmed later.

If you have any queries contact enquiries@ememathshub.org

