



L.E.A.D. Professional Development

@LEADTSHub
@LEADTSHub
www.leadtshublincs.co.uk

Proud to be working with



'WORKING IN PARTNERSHIP, ACHIEVING THE HIGHEST OUTCOMES FOR ALL' Issue No.40 October 2025

OCTOBER NEWS

Welcome to the October edition of the L.E.A.D. Professional Development Newsletter.

As the first half of the term progresses, we are excited to share the latest updates, opportunities, and insights. This month's edition highlights professional development events, and offers resources to support both new and experienced educators.

Whether you are navigating the busy start of the school year or planning ahead for future training, we are here to support your journey in teaching and leadership.

Do not hesitate to contact one of the professional development team here at the Hub if you have any further questions or queries.



Visit Other Schools for Free!

Why not take the time with key staff members to visit other settings and see practice... **for FREE**. Lincolnshire schools have willingly opened their doors to share practice with others. Do not miss the opportunity as there are limited spaces available.

Click on our brochure to find out more and how to book your space.



Small Schools page 77

Reading page 112

Writing page 131

Early Years page 145

SEND page 170

Behaviour and Attendance page 222

The Children's Commissioner Report



The Children's Commissioner Report has been released. Drawing on insights from over 18,500 mainstream schools and colleges, the report captures the realities of supporting children (aged 2–18), their vulnerabilities, needs, and the pressures schools face daily. You can access it here:

Children's Commissioner Report 2025: Inclusion and SEND in Mainstream Schools

Takes you to a blog, we'll break down the Children's Commissioner Report recommendations and what they mean for your school, with a particular focus on SEND and inclusion.



SEND & AP Change Programme

The Department for Education have confirmed that the SEND & AP Change Programme has been extended for a further 12-months to March 2026. The Reaching Excellence and Ambition for all Children (REACH) Consortium will continue to be the DfE's delivery partner on the Change Programme, working alongside local areas and the DfE to test reforms and capture learning

Early Years

Ofsted's new early years inspection toolkit outlines the areas under which settings will be evaluated against. You can read an article exploring the changes here:



Free printable wellbeing activities – designed for use at home or in school to help children understand their feelings, build resilience, and navigate life's challenges can be accessed here:



The Partnership of Children's Skills for Life Programmes continue in Lincolnshire. Further details can be accessed here:



Early Years Government Guidance

On 15th September, the government released guidance on how to use the good level of development (GLD) data tool to access your GLD data report.

You can use the report to view and compare:

- the overall percentage of children achieving a good level of development
- the overall percentage of pupils reaching each early learning goal
- GLD results for different pupil groups
- your contextual GLD data – a school's contextual GLD score shows the overall GLD percentage we would expect a school to achieve



The tool can also help you identify areas of strength and opportunities to improve early years practice in your school, including:

- specific areas of child development that need further attention
- specific groups of pupils that are developing well or less well
- devising strategies to address areas that need further attention

Please access the PPT from the DfE Webinar, the importance of reception and the data to support leaders.



Quality of Education

The DfE have released the data for **Key Stage 2 attainment for the academic year 2024/2025:**



The DfE have released updated guidance on **GCSE French, German and Spanish** content. This document incorporates updates from the previous versions published in February 2025 and May 2022. Please follow the link here to view:



Oracy - Why oracy education has never mattered more? An interesting article to share with staff. Click here to read more:



What Every Teacher Needs to Know About Assessment

The linked ebook brings together a collection of panellists for the #EveryTeacher event speak clearly about what teachers need to know about assessment, and about what they should do more (and less) of.



Their voices join those of Prof Dame Alison Peacock, Sir David Carter, Stephen Munday, Prof Rob Coe, and the thousands upon thousands of teachers who simply want to do the best they can to improve students' outcomes.

WRITING

Need support in writing? Is this your current area of focus and a priority? See the CPD opportunities available to support this:

Writing Framework Webinar for Leaders

The Department for Education delivering a national webinar specifically aimed at system leaders, where they shared key messages from the Writing Framework release. The webinar ensured that senior leaders clearly understand the importance of the Writing Framework, its key messages, and the expectations for writing in the next academic year.

A recording has been made by the DfE. If you would like support in accessing this, please email sophiehurst@leadtshub.co.uk

'Writing framework: key messages'

Following the department's leadership webinar, there will be a series of webinars which hubs will lead, aimed at English leads and class teachers.

The first hub webinar will focus on the key messages of the writing framework and serve as an opportunity to address common queries and dispel some of the myths that have emerged since its publication.

Session 1: Monday 13th October 2025
3.30pm - 4.30pm / Online

To attend the first Writing Framework Webinar, please click the link:



Further programmes to support your writing journey as a school. Please click to view:

Strengthening Literacy Skills in the Early Years Framework

Supporting Early Language Development

Oracy Rich Classrooms

Developing a Progressive Writing Curriculum

Developing your School's Transcription

Handwriting Instruction

Teaching Grammar/ Pedagogy

Being a Writing Teacher

Disciplinary Literacy

READING

Beyond literacy: why reading matters to strengthen bonds and relationships

To celebrate International Literacy Day on 8 September 2025, Annie Crombie from BookTrust wrote about the importance of reading.



The linked blog by HfL explores key strategies for developing speaking skills in the classroom.



AI

Read the 2025 AI in Education Report from Microsoft for insights on learning, teaching, workforce readiness and institutional innovation.



Amazon Web Expert Phil Le-Brun offers top tips for creating an environment where teams can embrace AI. Read more here:



This article by Daisy Christodoulou explores the potential of AI on our cognition as a society:



Improving Wellbeing

Awareness days can be valuable points in the academic year to pause, reflect and focus on important issues. They can help start meaningful conversations, bring people together and strengthen a sense of belonging across the school or college community.

This calendar, by Mentally Healthy Schools, has been designed to help you make the most of these opportunities throughout the academic year:



Career Development

In this article, the CEO of 'The Careers and Enterprise Company', John Yarman explores how careers education can be woven into the fabric of every school's improvement culture.



Appraisals

Appraisals will be on everyone's horizon this month. TDT hosted a forum with school leaders, delving into the real-world challenges of appraisal following the removal of Performance Related Pay (PRP).

Building on **TDT's recent report** and recommendations, their goal was to hold a space for leaders to discuss with one another the practical issues they are grappling with as the appraisal landscape shifts.

You can read their guidance here:





Leadership Briefing



Lincolnshire
Education
Group

Dates for the Leadership Briefings this year - click on your chosen date/venue to book:

AUTUMN TERM

PRIMARY, NURSERY & SPECIAL

**Wednesday 1st
October 2025**
City of Lincoln

**Tuesday 7th
October 2025**
North Kesteven

**Wednesday 8th
October 2025**
East Lindsey

**Thursday 9th
October 2025**
West Lindsey

**Tuesday 14th
October 2025**
South Kesteven

**Wednesday 15th
October 2025**
Boston & South Holland

SECONDARY & SPECIAL

Friday 10th October 2025

Owing to an increased number of schools having a two week half term, please note the Secondary & Special date has changed, so please update this if you have not already in your diaries.

SPRING TERM

CROSS-PHASE

Tuesday 3rd March 2026
South Kesteven

Wednesday 4th March 2026
East Lindsey

Thursday 5th March 2026
City of Lincoln

Tuesday 10 March 2026
North Kesteven

Wednesday 11th March 2026
West Lindsey

Thursday 12th March 2026
Boston & South Holland

SUMMER TERM

PRIMARY, NURSERY & SPECIAL

**Tuesday 2nd
June 2026**
West Lindsey

**Wednesday 3rd
June 2026**
City of Lincoln

**Thursday 4th
June 2026**
East Lindsey

**Tuesday 9th
June 2026**
South Kesteven

**Wednesday 10th
June 2026**
North Kesteven

**Thursday 11th
June 2026**
Boston & South Holland

SECONDARY & SPECIAL

**Tuesday 16th
June 2026**

Pupil Premium

An effective Pupil Premium strategy allows schools to intervene early and prevent these attainment gaps from growing. It is one of the most powerful tools we have for supporting education equity. Find out more with assessment tools and guidance here on the EEF website.



Four STEPS to transform your Pupil Premium Strategy

"As the autumn term kicks off, there is one deadline on the horizon for school leaders that matters more than most: updating their pupil premium strategy statement before 31st December".

Read the article here by EEF CEO Chris Paterson to help turn schools' pupil premium strategy into an evidenced and effective powerhouse to tackle inequality



SEND

The SEND Workforce Development team are delighted to announce that our next two modules will go live in September to complement the five Tier 1 Extension modules that were published before the Summer holidays. The new modules are:

- **Every Teacher is a Teacher of SEND**
- **De-Escalation**

As with all of our modules (Induction Tier, Tier 1 and Tier 1 Extension), they are **FREE** to access by logging into the **Lincolnshire Safeguarding Children Partnership platform** and clicking on the **'Learning'** tab. If you, or any of your team, have any issues with finding any of the modules, please do not hesitate to get in touch.

Explore more here



We have also just launched our **brand new website** with all of the key information about the project:



Please feel free to share any of this information with your wider team. We would like to take this opportunity to thank you for your continued support of the project. Since the first modules went live in December 2022, over 12,500 modules have been completed by colleagues across Lincolnshire.



Follow the SEND Workforce Development Project @SENDWorkforce



New Ofsted School Inspection Toolkit



Ofsted have released the new School Inspection Toolkit - access it here:



You can read a summary of the changes here:



These slides, from a recent Ofsted webinar on 17th September give excellent insights into the new toolkit:

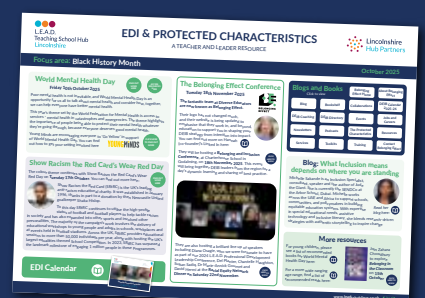


CLICK HERE

The EDI Calendar

EQUALITY, DIVERSITY AND INCLUSION

L.E.A.D. Teaching School Hub remains committed to supporting schools in developing their approach to Equality, Diversity, Inclusion and Protected Characteristics.




Please find a copy of the latest EDI newsletter for October





Apply for the Teaching Internships Grant by Monday 20th October 2025

Schools can now apply for funding to deliver 3-week paid teaching internships to undergraduates and Masters students in the 2026 summer term. Internships give students interested in teaching maths, physics, chemistry, computing, design & technology or languages the opportunity to experience teaching before committing to it as a career. The programme also enables schools and ITT providers to build a pipeline of future teachers. Further information, including details of webinars to find out more, is available here: 



ITT Update

We are excited to welcome this year's trainee teachers to schools across Lincolnshire. Thank you to all of schools who welcome trainees for school placements this academic year, especially to the incredible mentors, whose expertise will be pivotal in trainee development.

Get School Experience



To help schools offer school experience, the DfE continues to offer a **free** service called 'Manage School Experience'.

This service helps schools:

- advertise the experience they offer candidates at their school
- manage bookings and cancellations
- communicate with candidates

School experience is important for people who are looking to become teachers. It offers them an opportunity to work with children and young people within a real school environment, so they can be sure they're making the right decision about their future.

Thank you to the following schools who have signed up:

- Fiskerton CE Primary School
- Long Sutton County Primary School
- Louth Academy
- Potterhanworth CE Primary School
- The Lincoln St Peter at Gowts CE Primary School
- The Lincoln Bishop King CE Primary School
- The Priory Academy LSST
- The Priory Belvoir Academy
- Staniland Academy
- Sutton St James Community Primary School
- University Academy Holbeach
- Walton Academy
- West Grantham CE Secondary Academy

If you would like any support signing up for the 'Get School Experience' website, please email laura@leadtshub.co.uk, who will be happy to help.

Book Recommendation

If you are hosting trainee teachers this academic year, the series of 'Walkthru' books are an excellent resource



What's New?

- From September 2025 the term early career teacher entitlement (ECTE) replaces early career framework (ECF) based training and induction
- Mentor training changes from 2 years to 1 year to reduce mentor workload and support greater flexibility
- Diagnostic tools to help tailor topics teachers need the most support with.
- More content on adaptive teaching and SEND to help teachers support the needs of their pupils.
- More examples for different phases, settings and subjects
- An enhanced focus on literacy and oracy
- A focus on translating research into practice and application of theory in the classroom.

Booking onto Training Events

Our first Autumn Term events begin this term. Our events calendar for ECTs and Mentors beginning September 2025 can be found [here](#) and our events calendar for ECTs and Mentors who began prior to September 2025 can be found [here](#). Please ensure your ECTs and Mentors have booked onto their events.

Events can be booked onto through the ECPDP platform for ECTs and Mentors who began prior to September 2025 and ECTP portal for ECTs and Mentors who began prior to September 2025.

Emails will be sent from Education Development Trust via ecf@educationdevelopmenttrust.com so please ensure that email address is not blocked or marked as spam.

EVENTS
CALENDAR
beginning
September
2025

EVENTS
CALENDAR
prior
September
2025

ECPDP
PLATFORM

ECTP
PORTAL

Log in details

If you are experiencing any issues logging into the above portals please contact Rachael rachael@leadtshub.co.uk or Sophie sophielougher@leadtshub.co.uk or call 01522 214459 so that we support you with this.



ECT Quality Assurance Process

In line with the DfE Key Performance Indicators (KPIs) L.E.A.D. Teaching School Hub Appropriate Body (AB) complete QA visits with a minimum 15% of our schools per academic year.

In order to meet this KPI we endeavour to work with a range of schools each year.

At L.E.A.D. Teaching School Hub we use the criteria below as a starting point to identify schools or Quality Assurance visits:

- Schools that haven't received a QA visit in the last 4 years
- Schools that are new to L.E.A.D. Teaching School Hub Appropriate Body
- Schools where there is a new Headteacher or Acting Headteacher / New management team
- Schools where there are inexperienced Induction Tutors and/or ECT Induction Co-Ordinators/Managers / Mentors
- Schools with an RI Ofsted rating
- Schools with a large number of ECTs
- Schools where an ECT has been identified as a cause for concern
- Schools where an ECT has raised concerns
- Feedback has been raised in interim surveys from either and ECT or Induction Tutor
- QA requested by the schools

Our quality assurance visits are built around a collaborative approach in which we meet with Headteachers, Induction tutors, Mentors and ECTs to gain a detailed understanding of the induction process, identifying the positives aspects as well as those that might be refined or developed further.

Our team have begun to contact schools to plan in Quality Assurance Visits for this term, if you would like to find out more about this process, please contact the Appropriate Body Team on 01522 214459.

Upcoming Statutory Induction Information Events

Induction Tutors and Headteachers	Thursday 25th September 2025 3.45pm – 4.30pm	These sessions are most appropriate for Induction Tutors and Headteachers who are responsible for overseeing the Induction process and ECTs – a bit confusing. To book onto this session please log onto ECT Manager and look under 'booked courses'.
Mentors and ECTs	Monday 29th September 2025 3.45pm – 4.30pm <i>(please note the change of date)</i>	These sessions are most appropriate for Mentors and ECTs to understand more about the Statutory Information during induction. If you are an ECT, to book onto this session please log onto ECT Manager and look under 'booked courses'. If you are a Mentor please book onto this session using the link here.

BOOK HERE

Other dates for this Term

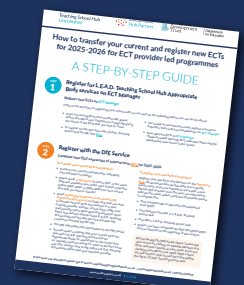
Progress Reviews and Assessment Deadlines
Thursday 27th November 2025

Reduction Request Deadline
Friday 17th October 2025

Registering New ECTs

If you have an ECT who is new to your school, please make sure you have registered them for induction. Follow this link for a step-by-step guide to registering your ECT:

The deadline to register ECTs for the Autumn Term are **Friday 3rd October 2025**. Failure to register ECTs by this date will result in a delayed Induction.





Autumn NPQ Cohort

This Autumn: APPLY FOR ONE OF THE FULL SUITE OF NPQs



Find out more here:



Time is running out to apply for our November cohort of NPQs. You can find further details and how to apply on our website here:



NPQH and NPQSENCo are fully funded. All other NPQs are based on eligibility criteria. You can check your setting's eligibility here:



NPQs: updates

It is a very busy time for NPQs. There is lots of activity including application windows opening and changes to current processes. Please find all essential information below:

Changes to Deferrals:

There have been some key changes to the DfE deferral guidelines to Lead Providers. See below for details.

Deferral - Key Policy changes (effective from November 2025):

- New deferrals only permitted in **extenuating circumstances**
- Newly deferred participants (from November 2025) must rejoin the **next available cohort**.

Extenuating circumstances

We need to maintain an element of flexibility when considering what counts as extenuating personal circumstances. As such, the list below shouldn't be considered exhaustive:

- Health or pregnancy related,
- Bereavement,
- Change in carer/caring responsibilities,
- Significant changes to employment,
- Personal circumstances - e.g. family breakdown, housing instability, victim of crime

Therefore consider:

- Is the reason for deferral an extenuating circumstance (as above)?
- How long do they need to pause the programme? Could the programme member catch up instead of deferring? (we would recommend up to three missed events in succession could be caught up)
- Are there any reasonable adjustments that could support this programme member to continue engaging with the programme?



Good Luck!

We want to take this opportunity to wish cohort 7 specialist programme members the best of luck in their upcoming assessment, and congratulate cohort 6 who have completed theirs.

Our facilitators have loved working with you and we wish you every success.



Blog: When do NPQs lead to school Improvement?

Colette Duggan, our Deputy Director, and lead for NPQs has written a blog for TDT to support leaders in how to help settings get the most from NPQs. You can read a copy of this here:



NPQs: Meet the Team

We are continuing to introduce you to our wonderful facilitation team. This month we are introducing you to **Lesley Coulthurst** who delivers on our NPQH programmes. You can find out more about her here:

My name is **Lesley Coulthurst**, and I'm an educator with a passion for collaborative ways of working, inspired by the African proverb: "To walk fast, walk alone; to walk far, walk together"—a mantra that runs through my core!

Having served as Head Teacher at a local authority primary school in Lincolnshire for 10 years, I have since held a variety of roles championing school leadership and driving school improvement in Lincolnshire and further afield. These roles have included leading peer review programmes for Ambition Lincoln and the Schools Partnership Programme, creating headteacher performance management partnerships, leading headteachers' and governors' forums, and championing pupil voice through school councils and the Lincolnshire Music Festival.

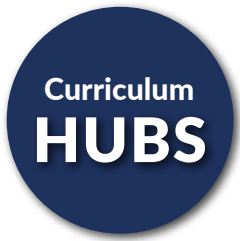
For the last two years, it has been my privilege to facilitate the NPQSL and NPQH programmes for the L.E.A.D. Teaching School Hub. Aligned with the hub's principles, my vision is to enable participants to create collaborative communities, learn from each other's contextual perspectives, and grow in confidence as they articulate the language of leadership.

A crucial part of facilitation is bringing the asynchronous learning to life for participants, linking the theoretical "learn that" statements of the NPQ frameworks to the practical "learn how to" applications. It is wonderful to see aspiring and new school leaders grow throughout their NPQ journey—becoming skilled listeners who are confident in unpicking others' thinking and experiences, and in using this new knowledge to broaden their own lived experiences.

Lincolnshire is so fortunate to have skilled and committed practitioners seeking to advance into leadership, and it is my great privilege to support and encourage them in doing so. I am very much looking forward to meeting those of you I have not met soon!



“I see my role as facilitator as the glue that connects participants' learning.”



Writing Framework Webinar for Leaders

As mentioned previously, the Department for Education delivering a national webinar specifically aimed at system leaders, where they shared key messages from the Writing Framework release. The webinar ensured that senior leaders clearly understand the importance of the Writing Framework, its key messages, and the expectations for writing in the next academic year.

A recording has been made by the DfE. If you would like support in accessing this, please email sophiehirst@leadtshub.co.uk

'Writing framework: key messages'

Following the department's leadership webinar, there will be a series of webinars which hubs will lead, aimed at English leads and class teachers.

The first hub webinar will focus on the key messages of the writing framework and serve as an opportunity to address common queries and dispel some of the myths that have emerged since its publication.

**Session 1: Monday 13th October 2025
3.30pm - 4.30pm / Online**

To attend the first Writing Framework Webinar, please click the link:



English Hubs

Witham St Hughs English Hub

Lincolnshire Reading Pledge Gold School Visits



We are incredibly excited to share this academic year's Gold School open sessions as part of our Reading Pledge programme. Please use the links in the flyer below to book onto the events.

Is your school participating in the Lincolnshire Reading Pledge?
Would you like to visit a Gold Awarded school?

To book your place on one of the following school visits, please click on your chosen date below.



St Peter at Gowts CofE Primary School

**Thursday 6th November 2025
9.30am - 11.45am**

Pennell Street, Lincoln LN5 7TA



Wygate Park Academy

**Wednesday 11th February 2026
9.30am - 11.45am**

Witham Road, Spalding PE11 3WT



**LING MOOR
A PRIORY ACADEMY**



Ling Moor Academy

**Thursday 30th April 2026
9.30am - 11.45am**

Richmond Drive, Lincoln LN6 8QZ



Branston CofE Infant School

Wednesday 24th June 2026, 9.30am - 11.45am

Beech Road, Branston, Lincoln LN4 1PR



The Holt Primary School

Thursday 22nd June 2026, 1.15pm - 2.45pm

15 Swallow Avenue, Skellingthorpe, Lincoln LN6 5XJ

Secondary Pilot Update

'Planning for' the DfE Secondary Pilot is underway and we are incredibly excited to share the updates below:

The pilot has 3 main aims:

1.

To ensure Literacy is a strategic priority

2.

To identify resource needs

3.

To take a whole school approach to reading

These aims will be carried out through the following levels of support:

Intensive Support Offer

3 partner schools:

2 Literacy Specialist days over 12 months

Targeted Support Offer

10 Literacy Specialist Support Days



Up to £3,300 in financial support

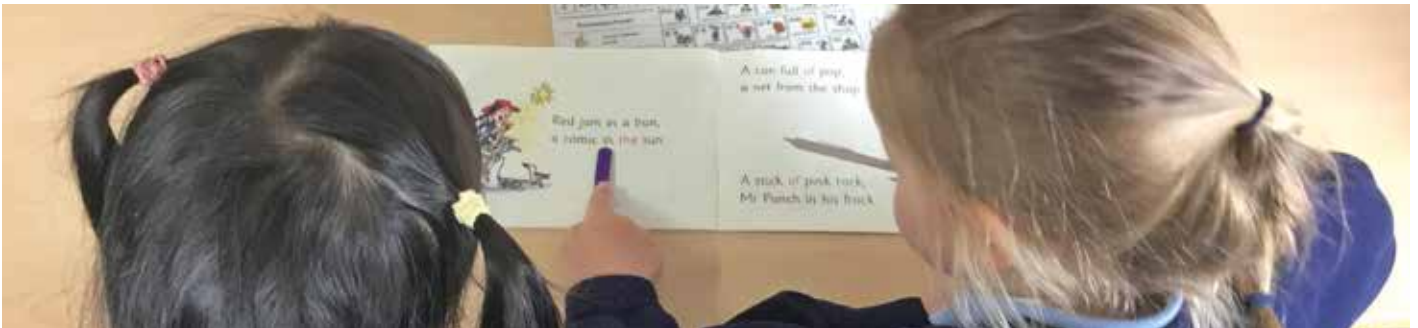
- Comprehension and fluency support
- Reading assessments to screen
- Diagnostic tools
- A programme that includes phonics

Cannot be used for reading books

Conditions

- Commitment from leadership to complete Professor Jessie Ricketts' CPD
- Headteacher engagement
- Usually expected to match fund

Upcoming Medium Level Support



Literacy Specialist Support Days

Would you like in school support from one of our DfE trained Literacy Specialists to develop Early Reading?

A Literacy Specialist support day is FREE of charge and the school will receive £100 'back-fill' to release their Phonics Leader from class to work with the Literacy Specialist.

The Literacy Specialist will work alongside the Headteacher and Phonics Leader to offer advice and guidance to develop:

- Fidelity to the school's chosen SSP programme, whilst making adaptations to meet the needs of children not keeping up with expectations;
- The consistency, pace and progression of Phonics lessons;
- Accelerated progress of the first 20%;
- The effectiveness of phonics interventions;
- The expertise of Phonics Teachers;
- A 'Strong Start in Reception';
- The consistency of closely matched decodable reading books;
- Reading application to develop fluency;
- Expertise and role of the Phonics Leader;
- The school's Reading for Pleasure culture;
- The school's approach to Early Language;
- A bespoke school audit to identify strengths and areas for development;
- The school's approach to Early Reading, in line with the School Inspection Framework.



Cost FREE

Headteachers must also be involved.

To request a free Literacy Specialist Support Day, please contact sophiehurst@leadtshub.co.uk



Witham St Hughs Academy OPEN MORNINGS

Would you like to visit our
'outstanding' English Hub Lead School?


Witham St Hughs Academy
A.L.E.A.D. Academy

WITHAM ST HUGHS ACADEMY

Witham St Hughs Academy is one of 34 English Hub Lead schools across the country. Witham St Hughs Academy was selected by the DfE to share their expertise in teaching reading with schools in surrounding areas.



**Wednesday
8th October
2025**



**Wednesday
26th November
2025**



**Wednesday
4th February
2026**

During the Open Mornings, you will have the opportunity to:

- Observe high quality Phonics lessons;
- Observe the Reading for Pleasure culture across the whole school;
- Look at children's Phonics and English books;
- Look at the learning environment and organisation of resources and teaching areas;
- Hear how the school timetables Phonics and English lessons;
- Talk to children and teachers;
- Hear from Witham St Hughs Academy's Reading & Phonics Leader;
- Speak to our English Hub Lead and ask any questions.

To book, click on dates or scan QR

Witham St Hughs Academy,
Muntjac Way, Lincoln, LN6 9WF

8.45am - 11.45am

Adaptive Teacher Pathway

A 2-day Professional Learning Programme

Building inclusive classrooms through adaptive practice.

Updated for 2025/26, this programme will equip educators with practical strategies to adapt teaching for all learners. Explore core principles, assessment, collaboration, and the use of AI and assistive technology to create inclusive classrooms.

**Thursday 25th September
& Thursday 4th December**

9.15am to 3.30pm

Venue: LEARN SEND Hub

Audience: All educators

Cost: £225

Readiness to Learn: Approaches to Behaviour

A 2-day Professional Learning Programme

Practical strategies to turn behaviour into learning readiness.

This programme helps educators create inclusive classrooms where every pupil is ready to learn. Explore evidence-based strategies to build self-regulation, positive routines, and belonging, with practical tools to support pupils with ADHD, autism, and additional needs.

**Thursday 2nd October
& Thursday 27th November**

9.15am to 3.30pm

Venue: LEARN SEND Hub

Audience: Primary educators (including leaders)

Cost: £225

Supporting Speech Sound Development

Interactive half-day course

Boost clarity and confidence in pupil communication.

Learn practical strategies to support pupils' speech sound development in the classroom. Explore typical development stages, how to identify difficulties, and engaging activities to improve clarity. Leave with the confidence to recognise and support pupils with unclear speech.

Thursday 9th October 2025

9.30am–12.30pm

Venue: LEARN SEND Hub

Cost: £100

Using Lego Play to Support Social Skills

Interactive half-day training

Build social interaction brick by brick.

Discover how to set up and deliver a Lego Club to support social interaction and communication. Learn how structured and free-style Lego play can boost motivation, develop peer relationships, and support pupils with autism or gaps in social skills.

Autumn: Thursday 16th October

Spring: Thursday 5th March 2026

9.30am–12.30pm

Venue: LEARN SEND Hub

Audience: Primary & Secondary Teachers and TAs

Cost: £100

Introduction to the SEND Journey in Action

New for 2025/26

Confidently navigating SEND systems in your school.

A practical course for new and experienced SENCOs to strengthen their skills in managing SEND processes. Covering SEND registers, provision mapping, referrals, evidence for EHCPs, and effective systems, this training will build confidence and streamline SEND support in schools.

Option 1: Thursday 6th November

Option 2: Thursday 30th April 2026

9.15am–3.30pm

Venue: LEARN SEND Hub

Audience: SENCOs, Assistant SENCOs
& aspiring SENCOs

Cost: £125

Sensory Approaches: Understanding and Meeting Student Needs

New for 2025/26

Creating sensory-friendly pathways to learning success.

A one-day course providing practical strategies to support pupils with sensory processing needs. Explore sensory circuits, trolleys, rooms, and breaks to promote self-regulation, engagement, and inclusion, leaving with the confidence to integrate sensory approaches into your school.

Thursday 20th November

9am – 3.30pm

Venue: LEARN SEND Hub

Audience: Teachers, SENCos & Teaching Assistants

Cost: £125

Maths Hub



FREE Maths CPD opportunities for teachers of all phases

East Midlands East Maths Hub has a few final spaces remaining for these FULLY FUNDED Work Groups:

TO FIND OUT MORE AND TO EXPRESS AN INTEREST PLEASE CLICK ON YOUR CHOSEN EVENT

Primary

Primary Teaching for Mastery (Introductory)

for Early Years Teachers, Primary Teachers, Primary Teaching Assistants and Early Career Teachers – one-year programmes that develop mathematical subject knowledge and pedagogy.

Primary

Specialist Knowledge for Teaching Mathematics for Early Years Teachers

A one-year programmes that develop mathematical subject knowledge and pedagogy.

Cross-Phase

Years 5-8 Continuity

Strengthen the transition from Primary to Secondary school.

Secondary

Specialist Knowledge for Teaching Mathematics for Secondary

For Secondary Early Career Teachers, Teaching Assistants and Secondary Non-specialist Teachers - one-year programmes that develop mathematical subject knowledge and pedagogy.

Post-16

Specialist Knowledge for Core Maths Teachers

For Core Maths Teachers - one-year programmes that develop mathematical subject knowledge and pedagogy.

Post-16

Developing Core Maths Pedagogy

Developing A Level Pedagogy

Implement improved teaching approaches and deepen pedagogic content knowledge.

Post-16

Supporting Students to Achieve a L2 Qualification in Maths

Develop transferable teaching techniques aligned to teaching for mastery.

To reserve your place or for more information, please visit www.ememathshub.org or email enquiries@ememathshub.org

The National Consortium for Languages Education (NCLE)

The Priory Academy LSST has been selected to lead the Brayford Language Network for the National Consortium for Languages Education (NCLE). The NCLE is working with schools to raise the profile of languages and strengthen language teaching and learning in England.

Brayford Language Network

If you'd like to be involved, or even just be kept informed of new developments, then please do complete the contact details via this link:



The Brayford Language Network is one of 14 Language Networks across the country, working at local and regional levels to connect schools in communities of practice. They will drive change through research-informed action and sharing knowledge through Language Educators Online (LEO), NCLE's free online professional learning platform for languages teachers.

As well as sharing pedagogical practice and new initiatives, the Brayford Language Network will be leading on Languages and Employability and learning from our project will be shared across our network and nationally via LEO.

We hope to build on the success of our Language Hub and expand our reach through a programme of webinars and teach-meets to include more schools across the region. By joining a national network of schools, we will be working together with the NCLE to break down barriers to opportunity for all pupils.

The NCLE is funded by the Department for Education and is comprised of the UCL Institute of Education, the British Council and the Goethe-Institut. Find out more about the NCLE and visit the NCLE website.



Music Hub

The Music CPD offer for 2025/2026 is now live and ready to view here:



A wealth of exciting and impactful training opportunities available including:

- Music Subject Meetings starting on Thursday 9th October (online)
- Composing with Confidence for Ks3 and Ks4 on 23rd October with Rachel Shapey from I can Compose
- Create and Sing with Ks2 in partnership with the Royal Opera House on Wednesday 12th November

Securing a Music Hub Partnership ensures FREE access to many of our CPD courses. It also includes:

- Consultancy Support
- Music Mark Recognition for Schools
- Lincs Music Hub Partner Kitemark
- Access to our gated portal of resources

To find out more:





This month's opportunity for professional development

Click on your chosen programme below to book



Tuesday 7th October

**Active Spelling
Open Morning**



Tuesday 7th October

**Subject Leader Network:
Primary PSHE**



Tuesday 7th October

**Subject Leader
Network: PE**



Wednesday 8th October

**Schools Exchanging
and Sharing Practice**

Writing
St Peter at Gowts CofE Primary



Wednesday 8th October

**Schools Exchanging
and Sharing Practice**

Early Years
Branston CofE Infant Academy



Wednesday 8th October

**New to the Early Years
Foundation Stage**



Thursday 9th October

**Subject Leader Network:
Primary Geography**



Monday 13th October

**Subject Leader Network:
Primary Science**



Tuesday 14th October

**Subject Leader
Network: Primary
Computing**



Tuesday 14th October

The Teaching of Reading



Wednesday 15th October

**Schools Exchanging
and Sharing Practice**

Early Years
Barrowby CofE School



Friday 17th October

**Ofsted Report Card
Spotlight: Leadership That
Drives Improvement**



Tuesday 21st October

SEND in the Mainstream

St Thomas' CE Primary
Academy



Tuesday 21st October

**Developing Your School's
Transcription Curriculum**



Wednesday 22nd October

**Schools Exchanging
and Sharing Practice**

Writing
Ling Moor Priory Academy



Wednesday 22nd October

SEND in the Mainstream
Church Lane Primary School



Tuesday 4th November
SEND in the Mainstream
 Witham St Hughs Academy



Wednesday 5th November
New to Headship



Wednesday 5th November
Aspiring to Headship



Thursday 6th November
Subject Leader Network:
Primary DT



Friday 7th November
Ofsted Report Card
Spotlight: Building
Positive Behaviour
for Learning



Tuesday 11th November
Subject Leader Network:
Primary Languages



Tuesday 11th November
Active English
Open Morning



Tuesday 11th November
Subject Leader Network:
Primary History



Tuesday 11th November
Understanding child
development to
support all children's
personalised learning



Tuesday 11th &
Wednesday 12th
November
Mental Health First Aid



Wed 12th November
Schools Exchanging
and Sharing Practice
Early Years
 Digby the Tedder Primary



Thursday 13th November
Deputy / Assistant
Headship



Monday 17th November
Subject Leader Network:
Secondary Maths



Tuesday 18th November
Active Spelling
Open Afternoon



Tuesday 18th November
Subject Leader Network:
Primary Maths



Tuesday 18th November
Schools Exchanging
and Sharing Practice
Reading Post Phonics
 St Peter at Gowts CofE
 Primary School



Tuesday 18th November
Schools Exchanging
and Sharing Practice
Early Years
 St Thomas' CE Primary Academy



Wednesday 19th
November
Subject Leader Network:
Primary English



Wed 19th November
**Schools Exchanging
 and Sharing Practice**
Small Schools
 Digby the Tedder Primary



Wed 19th November
**Schools Exchanging
 and Sharing Practice**
Reading Post Phonics
 Barrowby CofE School



Wed 19th November
**Schools Exchanging
 and Sharing Practice**
Reading Post Phonics
 Alford Primary School



**Wednesday 19th &
 Thursday 20th November**
**Youth Mental Health
 First Aid**



Thur 20th November
**Schools Exchanging
 and Sharing Practice**
Reading Post Phonics
 Ling Moor Priory Academy



Thur 20th November
**Schools Exchanging
 and Sharing Practice**
Early Years
 Church Lane Primary School



Thur 20th November
**Schools Exchanging
 and Sharing Practice**
Early Years
 Grimoldby School



Friday 21st November
**Ofsted Report Card
 Spotlight: Embedding
 Core Values Across
 Your School**



Monday 24th November
**Subject Leader Network:
 Primary Art**



Tuesday 25th November
Early Headship



Friday 28th November
**Ofsted Report Card
 Spotlight: Understanding
 and Celebrating Your
 School Context**



Click on your chosen programme to book

**Missed
 an issue?**

View previous issues
 of the newsletter

