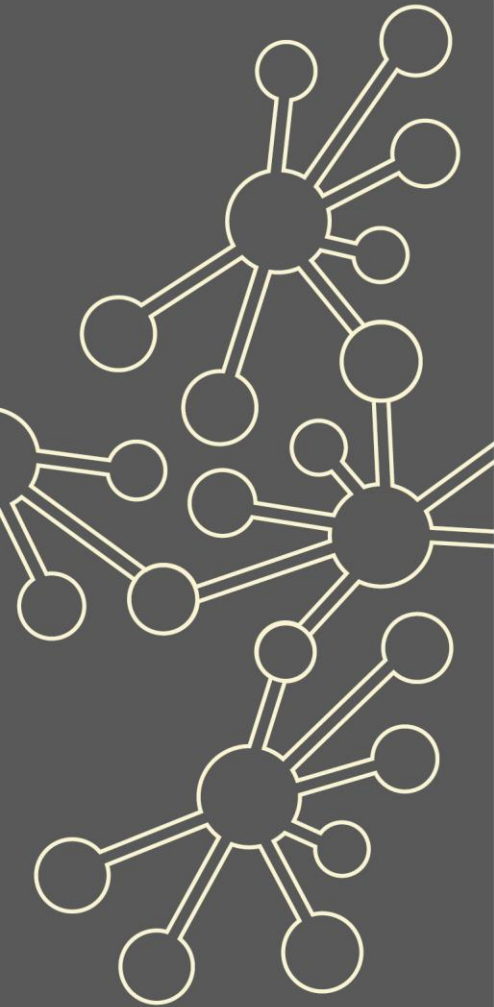


Years 5-8 Continuity

Maths Hubs Network
Collaborative Projects
2021/22

NCP21-19



Outline

Work Groups in this project aim to strengthen the transition from primary to secondary school by focusing on curriculum and pedagogical continuity over Years 5 to 8.

Central to the Work Group is the promotion of cross phase communication between teachers to address issues of maths knowledge and learning transition as distinct from pastoral considerations. Whilst many Work Groups will focus on using multiplicative reasoning resources, Work Groups can explore any aspect of the KS2/3 curriculum.

Details

What is involved?

Local Work Group design will follow a workshop – school-based work cycle, consisting of several workshops followed in each case by specific school-based work.

A lesson study approach is encouraged where all participants focus on a particular aspect of the maths curriculum and work collaboratively to develop this in their schools. Cross-phase classroom observation and discussion of practice is encouraged wherever possible. Participants are expected to consider ways to develop the approaches explored during the project with other staff in their schools.

Who can take part?

Participants should be teachers of Years 5-8 in primary, secondary, middle school and all-through schools who have some responsibility for curriculum development, e.g. primary school maths leads/secondary heads of department.

Linked 'families' of schools are encouraged to take part: ideally teachers from two (or more) secondary schools and some of their associated primary schools will work together.

What are the benefits?

Participants and their schools will:

- ✓ deepen knowledge and understanding of the curriculum across KS2 and KS3 and the expectations of pupils at the end of each key stage
- ✓ understand the approaches which will support pupils as they move from KS2 to KS3, including the importance of consistency of language and representations
- ✓ make use of common approaches, representations and language across phases
- ✓ develop collaboration between primary and secondary colleagues on issues of curriculum and pedagogy, making them part of the school's transition practice (and policy).

What is the cost?

The Years 5-8 Continuity project is fully funded by the Maths Hubs Programme so is free to participating schools.

Covid-19 Recovery

Many positive lessons were learnt from online collaboration during Maths Hubs activity in 2020/21. These will be built upon in 2021/22.

As the impact of the pandemic hopefully recedes, the result for Maths Hubs work will be a blend of face-to-face activities and frequent online collaboration.



The wider context

The Work Groups promote teaching for mastery approaches across the KS2-3 boundary to ensure consistency in the pupil experience, thereby meeting the primary and secondary strategic goals of establishing teaching for mastery approaches and encouraging schools in engaging with teaching for mastery support. The Work Groups also meet the Primary goal of ensuring that pupils 'are well prepared for the secondary maths curriculum'.

In particular in 2021/22, teachers will be working without the usual SATs data to support transition, so the Work Group's aim of developing collaboration to secure successful transition for pupils has an added significance. As the situation returns to normal, this enhanced communication and collaboration will ensure that, when data is available, it is used in a more informed way.

Expectations of participants and their schools

Schools must be able to commit to the full academic year's programme. This involves a total of three days of face-to-face support across the academic year, as well as classroom and school-based activity. Participants must also be supported by their school leadership to explore outcomes from the project with other colleagues in their school.

About the Hub

What is a Work Group?

Work Groups comprise of a group of schools who work on something together over the course of an academic year. Participating teachers will be guided by an experienced Work Group Lead, and will engage in intersessional tasks, trying things out in their classrooms, and feeding back to the group.

More information about the hub

At East Midlands East we are committed to supporting colleagues to become outstanding practitioners – learning from the best of local, national and international practice. We will work with colleagues to provide opportunities to engage with research, develop new practices and to share that development to make a positive impact on learners.

Work Group locations/dates

Dates and venue to be confirmed

Work Group Lead information

Georgie Goldstein, Assistant Maths Hub Lead, East Midlands East

To register an interest in the programme please follow the link below:

[Expression of Interest Form](#)

If you have any queries contact enquiries@ememathshub.org

