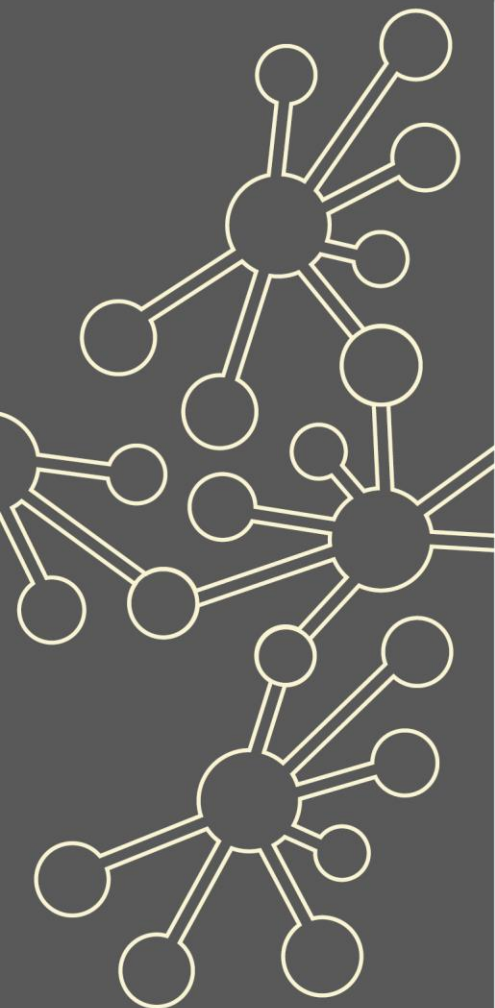


Supporting Post-16 GCSE Resit

Maths Hubs Network
Collaborative Projects
2021/22

NCP21-20



Outline

Primary focus for 2021/22: Post-16 GCSE resit pedagogy to support Covid recovery

Work Groups in this project will explore effective ways of teaching key content to GCSE resit students, and effective ways of working with teachers of post-16 resit GCSE in the context of Covid recovery. Participants will, through collaboration and experimentation, deepen their knowledge and understanding of the curriculum demands of GCSE Maths and their awareness of pedagogical approaches that best support students taking GCSE for the second time.

Participants' departments will, through shared good practice, become more effective at teaching GCSE resit. This will come from wider and more confident use of teaching approaches such as bar modelling, multiplicative reasoning, realistic contextualisation or teaching for mastery.

Details

What is involved?

Most Work Groups in the project will have three days (or equivalent) of direct meeting time. However, this may be adapted to suit the needs of the group, and could be three full day face-to-face sessions, six part-day/twilight sessions, or a blended mix of face-to-face and online meetings.

Participants will be representing their institution and working with colleagues in between Work Group sessions.

Who can take part?

This project is for teachers of post-16 GCSE Maths resit and/or any head of department where post-16 GCSE Maths resit is taught.

Participants may be based in FE colleges, sixth form colleges, schools with post-16 provision or other post-16 settings.

What are the benefits?

Participants and their departments will:

- ✓ improve their awareness of key concepts and themes relevant to the context of GCSE resit
- ✓ increase their awareness of appropriate pedagogies to help students make connections and deepen understanding
- ✓ share approaches to planning and delivery of key concepts with the Work Group and with departmental colleagues
- ✓ develop teaching and learning approaches and pedagogy to promote engagement of students
- ✓ work towards increased localised support and collaboration between 11-16 schools, FE colleges, sixth form colleges and 11-18 schools.

What is the cost?

The Supporting Post-16 GCSE Resit project is fully funded by the Maths Hubs Programme so is free to participating schools/colleges.

Covid-19 Recovery

Many positive lessons were learnt from online collaboration during Maths Hubs activity in 2020/21. These will be built upon in 2021/22.

As the impact of the pandemic hopefully recedes, the result for Maths Hubs work will be a blend of face-to-face activities and frequent online collaboration.



The wider context

There is a significant number of students who take the GCSE resit in the post-16 landscape and consequently teachers in schools and FE colleges require support to enable positive outcomes for students. The Maths Hubs Work Group model of professional development complements the current support offered by the FE Centres for Excellence.

Expectations of participants and their schools

Schools/colleges must be able to commit to the full academic year's programme. This involves a total of three days of face-to-face (or equivalent) support across the academic year, as well as classroom and school-based activity. Participants must also be supported by their school/college leadership to explore outcomes from the project with other colleagues in their department.

About the Hub

What is a Work Group?

Work Groups comprise of a group of schools who work on something together over the course of an academic year. Participating teachers will be guided by an experienced Work Group Lead, and will engage in intersessional tasks, trying things out in their classrooms, and feeding back to the group.

More information about the hub

At East Midlands East we are committed to supporting colleagues to become outstanding practitioners – learning from the best of local, national and international practice. We will work with colleagues to provide opportunities to engage with research, develop new practices and to share that development to make a positive impact on learners.

Work Group locations/dates

Dates and venue to be confirmed

Work Group Lead information

Keely Platten, KS5 Lead, Bluecoat Aspley, and Level 3 Lead for East Midlands East Maths Hub,

To register an interest in the programme please follow the link below:

[Expression of Interest Form](#)

If you have any queries contact enquiries@ememathshub.org

