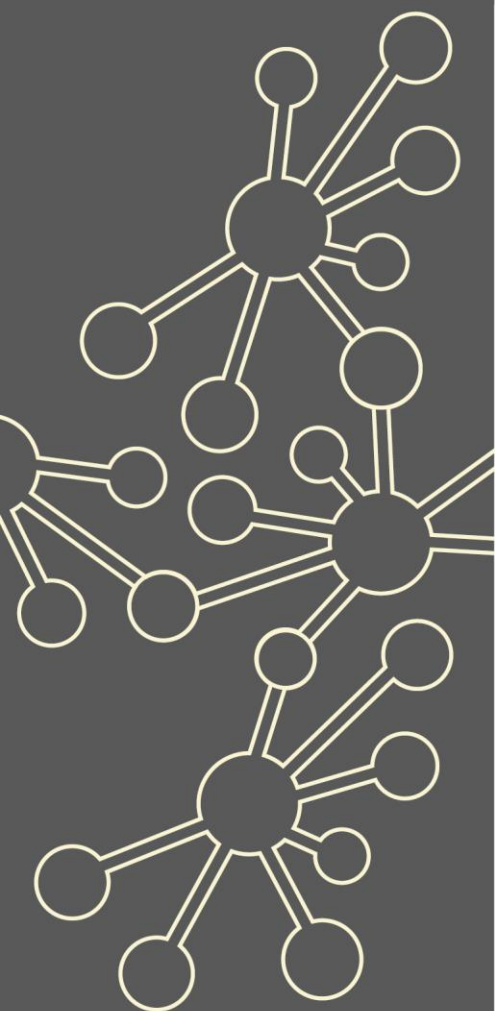


Strengthening Partnerships with ITT Providers

Maths Hubs Network Collaborative Projects 2021/22

NCP21-24



Outline

Now in its fourth year, this project provides opportunities for ITT providers and Maths Hubs to explore and share current mathematical developments and consider implications for their provision in order to help trainees transition into teaching mathematics effectively.

This Work Group runs on a regional basis in collaboration with colleagues from East Midlands West and East Midlands South Maths Hubs.

Details

What is involved?

Activity will be in the form of Work Groups, and may include working across hub boundaries and collaborating in larger regions.

Models for working could include:

- local/regional network meetings that lead to additional partnership work focusing on the issues the network group want to focus on, to strengthen the understanding of teaching for mastery pedagogy
- local/regional network meetings that review principles of teaching for mastery, share ITT units, adapt them for local use, and review where they sit in the institution's maths programme
- developing the expertise of mentors to support trainees in mastery-related maths lesson design
- observation of Mastery Specialists' lessons with follow up discussions about the mastery principles in order to identify specific developments for the overall ITT maths programme in light of current school-based practice.

Who can take part?

Lead participants in this programme will be from the ITT community; they should be directly involved in ITT with a responsibility for maths. It is expected that these participants will represent the various ITT providers across the hub region so may include HEI, SCITT and School Direct, and represent different phases of ITT including EYTS, QTS (primary and secondary), and post-16.

What are the benefits?

Participants and their institutions will:

- ✓ deepen understanding of, and involvement in, the work of their local Maths Hub and the Maths Hubs Network, along with their knowledge of the principles of teaching for mastery and how they relate to classroom practice
- ✓ review practices and programmes, aiming to ensure trainees have some understanding of lesson design informed by mastery principles
- ✓ develop planning which includes reference to the principles of teaching for mastery and is further enhanced by opportunities to observe Mastery Specialists' lessons with a follow up discussion.

What is the cost?

The Strengthening Partnerships with ITT Providers project is fully funded by the Maths Hubs Programme so is free to participating institutions.

Covid-19 Recovery

Many positive lessons were learnt from online collaboration during Maths Hubs activity in 2020/21. These will be built upon in 2021/22.

As the impact of the pandemic hopefully recedes, the result for Maths Hubs work will be a blend of face-to-face activities and frequent online collaboration.



The wider context

One of the strategic goals of the Maths Hubs Programme is for Maths Hubs to work with a range of partners to support effective initial training of new teachers of maths in primary and secondary schools, to ensure they have the specialist knowledge required to support the learning of maths. By 2023, the aim is for all engaged ITT programmes to include initial preparation for teaching for mastery.

These Work Groups are therefore needed to support sustained best practice networks between ITT providers and local hubs with a focus on teaching for mastery. These Work Groups are also needed to support the hubs in identifying the mathematical needs of their early career teachers, which informs their local offer.

Expectations of participants and their schools

Institutions must be able to commit to the full academic year's programme. This is likely to involve some face-to-face activity alongside online collaboration.

About the Hub

Work Group locations/dates

It is likely that the majority of sessions will be online – dates to be confirmed.

Work Group Lead information

This project is run regionally.

The Work Group Leads are:

- Jayne Ireland, Maths Hub Lead for EME Maths Hub
- Deliah Pawluch, Senior Lecturer, Nottingham Institution of Education, NTU
- Vivien Townsend, Primary Mathematics Tutor, Leicester and Leicestershire SCITT

Any other relevant information

To register an interest in the programme please follow the link below:

[Expression of Interest Form](#)

If you have any queries contact enquiries@ememathshub.org

